

Intermountain Gas Company

**Total Company – Design Weather,
Base Case Load Demand Curve
Integrated Resource Plan 2019 – 2023**



In the Community to Serve[®]

Exhibit No. 6
Section A
Fall 2019

Total Company Design Weather - Base Price

PY2019			DESIGN			
MONTH	CORE	INDUSTRY	TOTAL	PEAK DAY	PEAK CORE	INDUSTRIAL CD*
OCTOBER	3,709,547	4,501,169	8,210,716	284,381	139,182	145,199
NOVEMBER	4,881,381	4,355,970	9,237,351	353,382	208,183	145,199
DECEMBER	7,515,212	4,501,169	12,016,381	417,075	271,876	145,199
JANUARY	9,489,240	4,501,169	13,990,409	581,078	435,879	145,199
FEBRUARY	6,504,375	4,065,572	10,569,947	417,049	271,850	145,199
MARCH	5,715,506	4,501,169	10,216,675	348,560	203,361	145,199
APRIL	2,786,902	4,355,970	7,142,872	285,110	139,911	145,199
MAY	1,831,981	4,501,169	6,333,150	221,311	76,112	145,199
JUNE	885,023	4,355,970	5,240,993	189,335	44,136	145,199
JULY	503,815	4,210,771	4,714,586	162,593	17,394	145,199
AUGUST	724,096	4,501,169	5,225,265	195,136	49,937	145,199
SEPTEMBER	2,107,761	4,355,970	6,463,731	244,128	98,929	145,199
TOTAL	46,654,839	52,707,237	99,362,076			

* Includes LV-1 and T-4

INTERSTATE CAPACITY	
MAXIMUM DELIVERABILITY	543,162
TOTAL DELIVERABILITY DEFICIT	0
DAYS EXCEEDING MAX. DELV.	0

PY2020			DESIGN			
MONTH	CORE	INDUSTRY	TOTAL	PEAK DAY	PEAK CORE	INDUSTRIAL CD*
OCTOBER	3,801,318	4,538,602	8,339,920	289,248	142,841	146,407
NOVEMBER	5,017,149	4,392,195	9,409,344	360,642	214,235	146,407
DECEMBER	7,744,367	4,538,602	12,282,969	426,900	280,493	146,407
JANUARY	9,811,986	4,538,602	14,350,588	597,111	450,704	146,407
FEBRUARY	6,935,927	4,245,789	11,181,716	427,510	281,103	146,407
MARCH	5,910,596	4,538,602	10,449,198	356,703	210,296	146,407
APRIL	2,882,224	4,392,195	7,274,419	291,099	144,692	146,407
MAY	1,894,775	4,538,602	6,433,377	225,125	78,718	146,407
JUNE	915,425	4,392,195	5,307,620	192,058	45,651	146,407
JULY	521,158	4,245,789	4,766,947	164,400	17,993	146,407
AUGUST	749,079	4,538,602	5,287,681	198,068	51,661	146,407
SEPTEMBER	2,180,624	4,392,195	6,572,819	248,759	102,352	146,407
TOTAL	48,364,628	53,291,966	101,656,594			

* Includes LV-1 and T-4

INTERSTATE CAPACITY	
MAXIMUM DELIVERABILITY	560,611
TOTAL DELIVERABILITY DEFICIT	0
DAYS EXCEEDING MAX. DELV.	0

PY2021			DESIGN			
MONTH	CORE	INDUSTRY	TOTAL	PEAK DAY	PEAK CORE	INDUSTRIAL CD*
OCTOBER	3,932,998	4,548,599	8,481,597	294,523	147,794	146,729
NOVEMBER	5,191,314	4,401,870	9,593,184	368,407	221,678	146,729
DECEMBER	8,013,689	4,548,599	12,562,288	436,984	290,255	146,729
JANUARY	10,152,817	4,548,599	14,701,416	613,090	466,361	146,729
FEBRUARY	6,958,633	4,108,412	11,067,045	437,577	290,848	146,729
MARCH	6,114,039	4,548,599	10,662,638	364,281	217,552	146,729
APRIL	2,980,906	4,401,870	7,382,776	296,387	149,658	146,729
MAY	1,959,276	4,548,599	6,507,875	228,133	81,404	146,729
JUNE	946,407	4,401,870	5,348,277	193,929	47,200	146,729
JULY	538,696	4,255,141	4,793,837	165,326	18,597	146,729
AUGUST	774,140	4,548,599	5,322,739	200,114	53,385	146,729
SEPTEMBER	2,253,188	4,401,870	6,655,058	252,479	105,750	146,729
TOTAL	49,816,103	53,262,627	103,078,730			

* Includes LV-1 and T-4

INTERSTATE CAPACITY	
MAXIMUM DELIVERABILITY	542,555
TOTAL DELIVERABILITY DEFICIT	0
DAYS EXCEEDING MAX. DELV.	0

PY2022				DESIGN		
MONTH	CORE	INDUSTRY	TOTAL	PEAK DAY	PEAK CORE	INDUSTRIAL CD*
OCTOBER	4,063,137	4,573,167	8,636,304	300,192	152,670	147,522
NOVEMBER	5,362,095	4,425,645	9,787,740	376,476	228,954	147,522
DECEMBER	8,275,999	4,573,167	12,849,166	447,257	299,735	147,522
JANUARY	10,483,866	4,573,167	15,057,033	629,091	481,569	147,522
FEBRUARY	7,184,784	4,130,602	11,315,386	447,838	300,316	147,522
MARCH	6,311,933	4,573,167	10,885,100	372,129	224,607	147,522
APRIL	3,076,970	4,425,645	7,502,615	302,012	154,490	147,522
MAY	2,022,129	4,573,167	6,595,296	231,543	84,021	147,522
JUNE	976,630	4,425,645	5,402,275	196,232	48,710	147,522
JULY	555,813	4,278,124	4,833,937	166,709	19,187	147,522
AUGUST	798,621	4,573,167	5,371,788	202,592	55,070	147,522
SEPTEMBER	2,324,145	4,425,645	6,749,790	256,597	109,075	147,522
TOTAL	51,436,122	53,550,305	104,986,427			

* Includes LV-1 and T-4

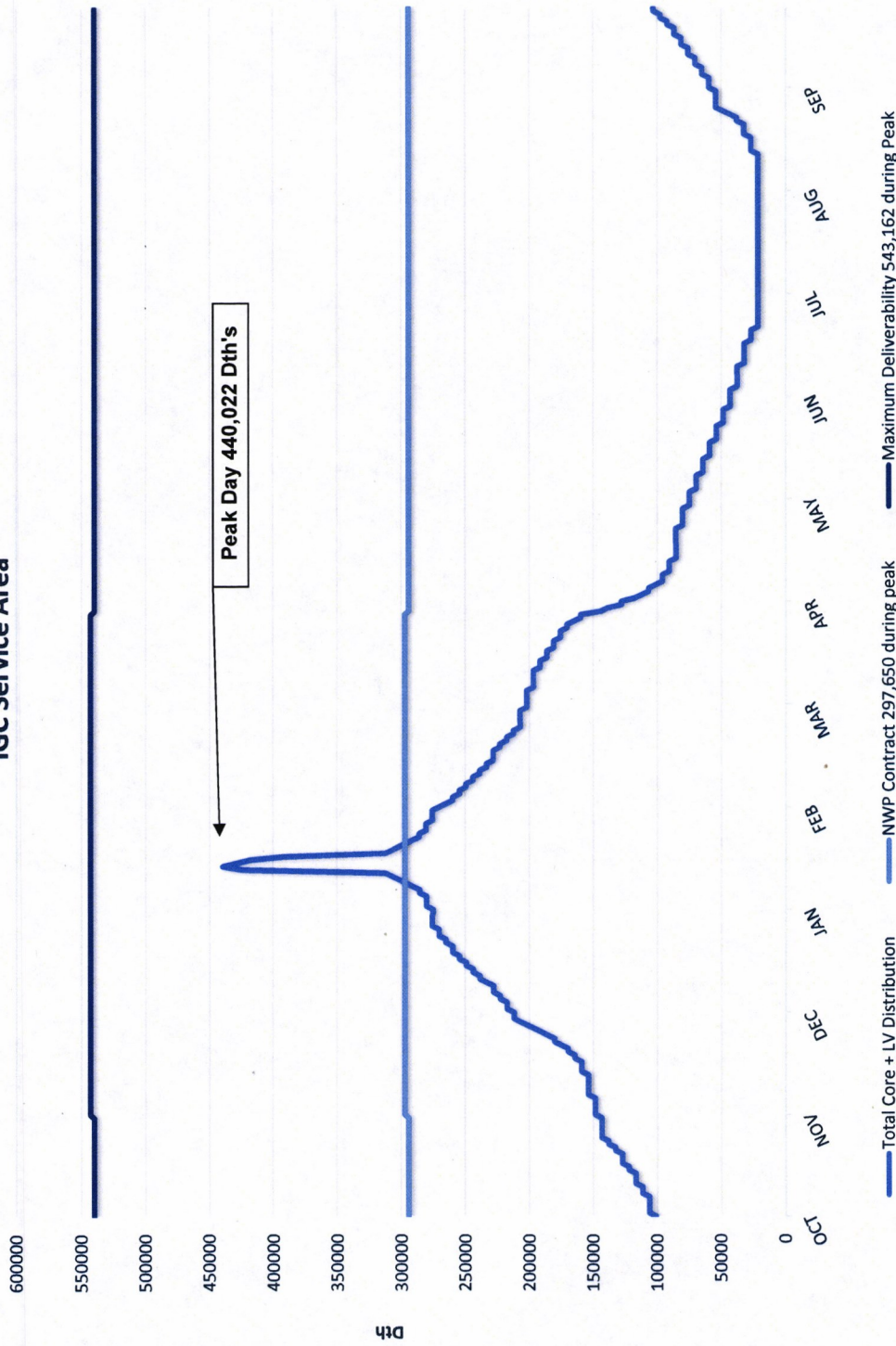
INTERSTATE CAPACITY	
MAXIMUM DELIVERABILITY	542,555
TOTAL DELIVERABILITY DEFICIT	0
DAYS EXCEEDING MAX. DELV.	0

PY2023				DESIGN		
MONTH	CORE	INDUSTRY	TOTAL	PEAK DAY	PEAK CORE	INDUSTRIAL CD*
OCTOBER	4,190,510	4,613,715	8,804,225	306,275	157,445	148,830
NOVEMBER	5,529,408	4,464,885	9,994,293	384,914	236,084	148,830
DECEMBER	8,533,193	4,613,715	13,146,908	457,863	309,033	148,830
JANUARY	10,808,895	4,613,715	15,422,610	645,330	496,500	148,830
FEBRUARY	7,407,270	4,167,226	11,574,496	458,451	309,621	148,830
MARCH	6,507,106	4,613,715	11,120,821	380,387	231,557	148,830
APRIL	3,171,964	4,464,885	7,636,849	308,093	159,263	148,830
MAY	2,084,453	4,613,715	6,698,168	235,442	86,612	148,830
JUNE	1,006,681	4,464,885	5,471,566	199,039	50,209	148,830
JULY	572,888	4,316,056	4,888,944	168,606	19,776	148,830
AUGUST	823,111	4,613,715	5,436,826	205,588	56,758	148,830
SEPTEMBER	2,395,307	4,464,885	6,860,192	261,243	112,413	148,830
TOTAL	53,030,786	54,025,109	107,055,895			

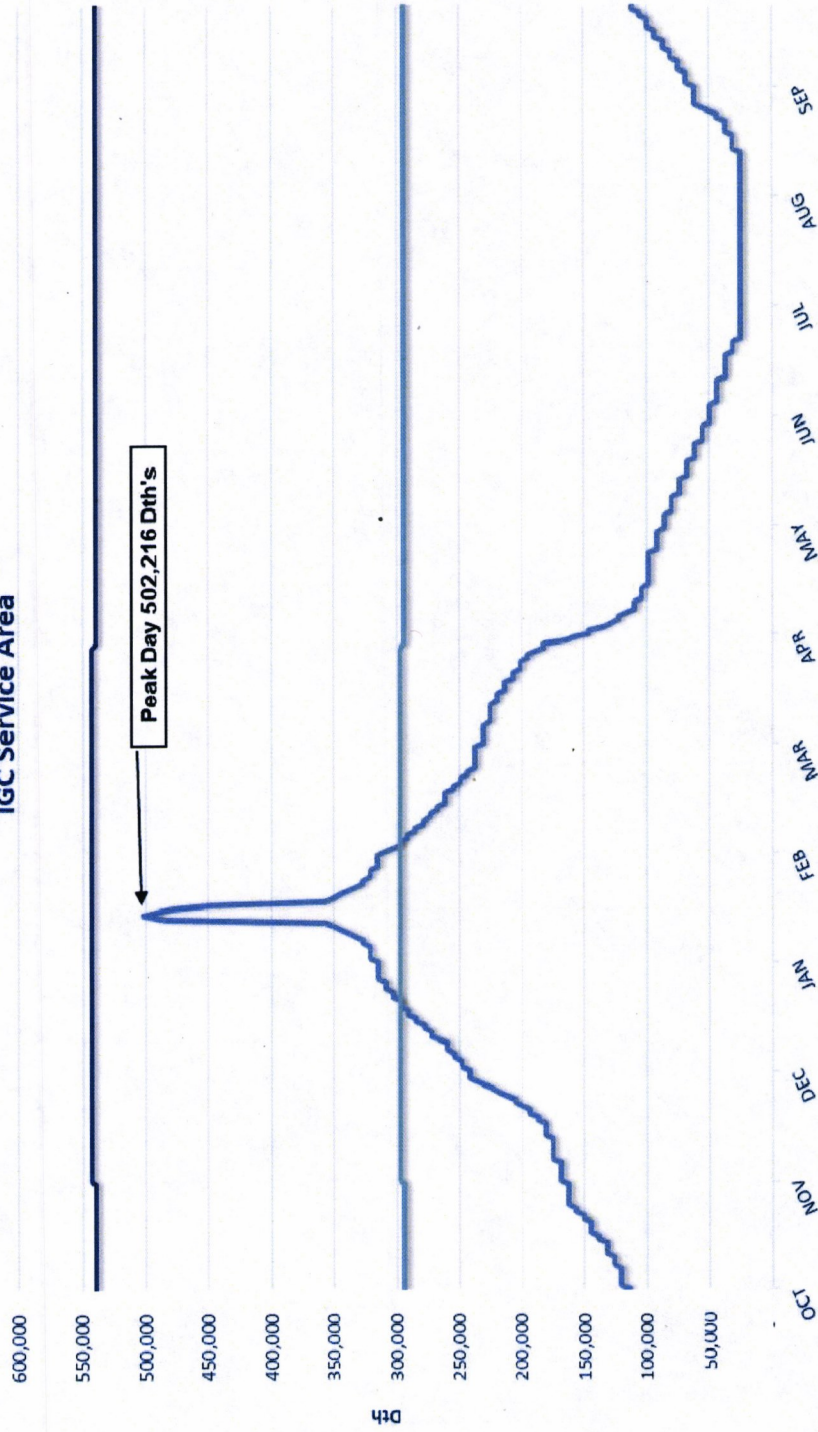
* Includes LV-1 and T-4

INTERSTATE CAPACITY	
MAXIMUM DELIVERABILITY	542,555
TOTAL DELIVERABILITY DEFICIT	0
DAYS EXCEEDING MAX. DELV.	0

2019 Total Company Load Demand Curve
Design Base Case
IGC Service Area

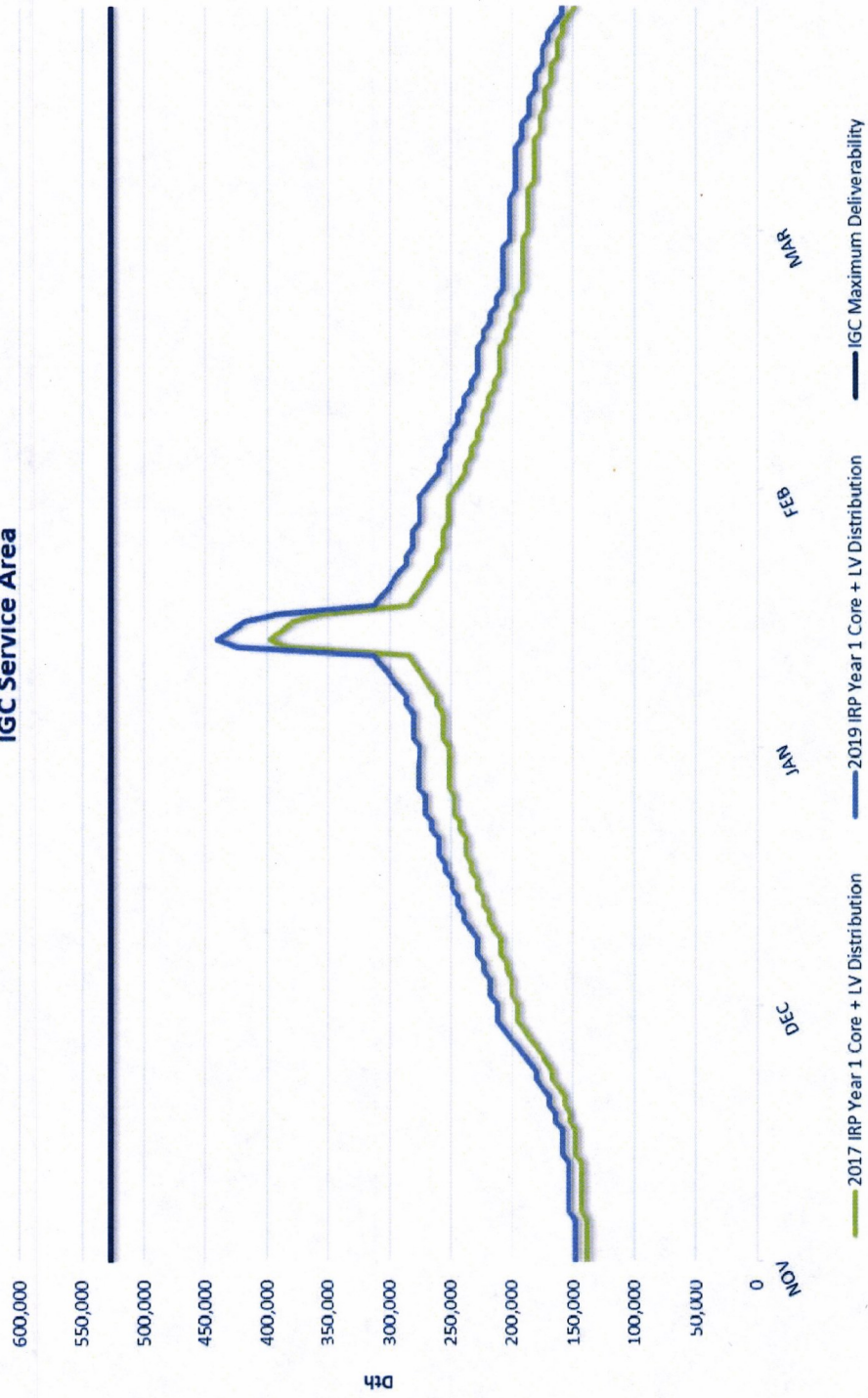


2023 Total Company Load Demand Curve
Design Base Case
IGC Service Area

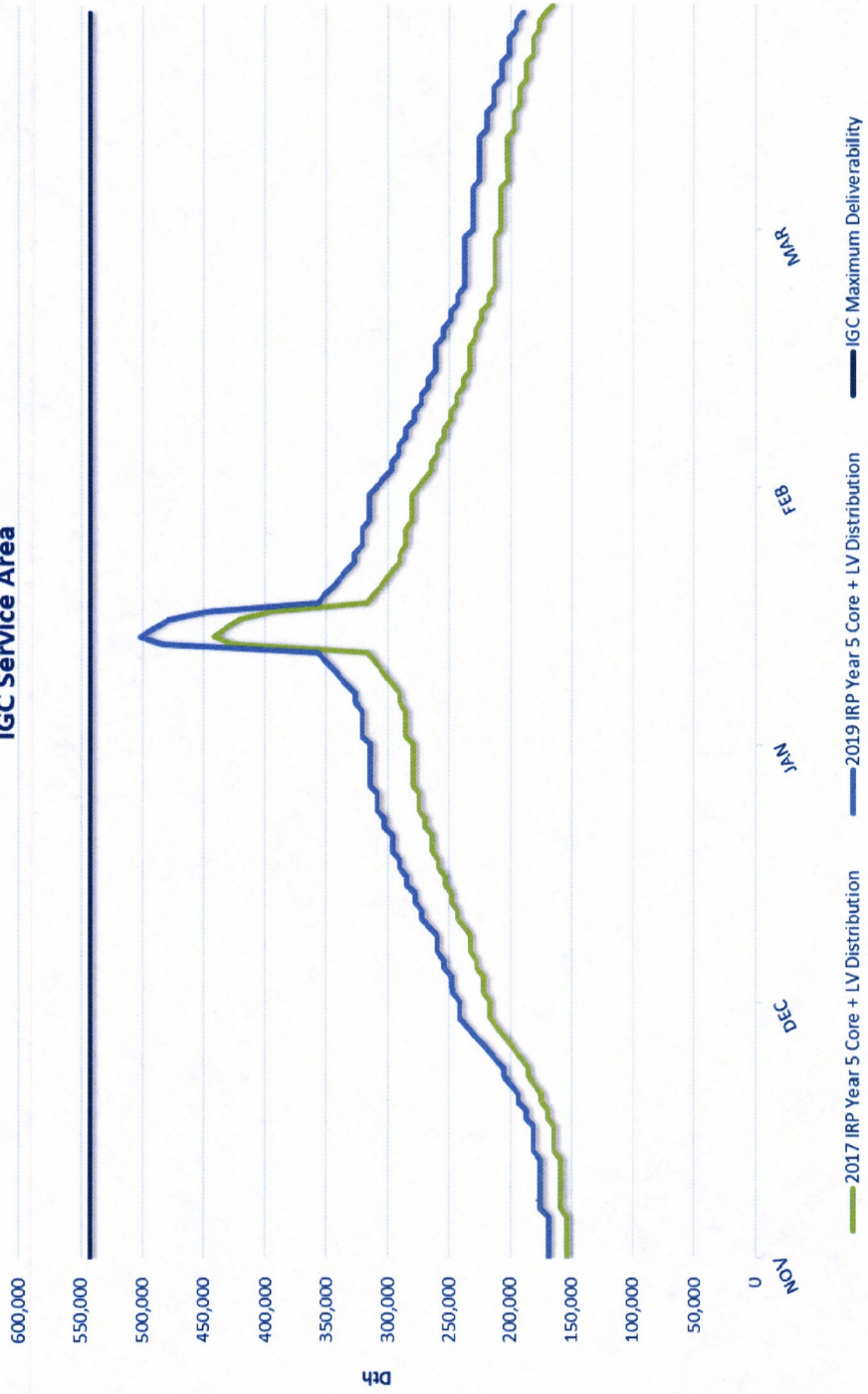


— Total Core + LV Distribution — NWP Contract 297,043 during Peak — Maximum Deliverability 542,555 during Peak

2017 vs. 2019 Year 1 Winter Comparison
Design Base Case
IGC Service Area



2017 vs. 2019 Year 5 Winter Comparison
Design Base Case
IGC Service Area



Intermountain Gas Company

**Idaho Falls Lateral – Design Weather,
Base Case load Demand Curve
Integrated Resource Plan 2019 – 2023**



In the Community to Serve[®]

Exhibit No. 6
Section B
Fall 2019

Idaho Falls Design Weather - Base

PY2019			DESIGN			
MONTH	CORE	INDUSTRY	TOTAL	PEAK DA	PEAK CORE	INDUSTRIAL CD*
OCTOBER	491,902	651,341	1,143,243	39,691	18,680	21,011
NOVEMBER	628,596	630,330	1,258,926	45,622	24,611	21,011
DECEMBER	941,434	651,341	1,592,775	53,331	32,320	21,011
JANUARY	1,243,118	651,341	1,894,459	80,697	59,686	21,011
FEBRUARY	946,168	588,308	1,534,476	56,332	35,321	21,011
MARCH	849,820	651,341	1,501,161	53,095	32,084	21,011
APRIL	416,750	630,330	1,047,080	39,912	18,901	21,011
MAY	267,111	651,341	918,452	31,312	10,301	21,011
JUNE	158,037	630,330	788,367	28,673	7,662	21,011
JULY	93,901	651,341	745,242	24,683	3,672	21,011
AUGUST	135,719	651,341	787,060	28,727	7,716	21,011
SEPTEMBER	337,934	630,330	968,264	34,797	13,786	21,011
TOTAL	6,510,490	7,669,015	14,179,505			

* Includes LV-1 and T-4

DISTRIBUTION CAPACITY	
MAXIMUM DELIVERABILITY	81,700
MAX DELIVERABILITY WITH LNG	88,400
PEAK DAY SENDOUT	80,697
DAYS EXCEEDING MAX. DELV.	0

PY2020			DESIGN			
MONTH	CORE	INDUSTRY	TOTAL	PEAK DA	PEAK CORE	INDUSTRIAL CD*
OCTOBER	558,700	660,641	1,219,341	42,554	21,243	21,311
NOVEMBER	715,714	639,330	1,355,044	49,361	28,050	21,311
DECEMBER	1,074,207	660,641	1,734,848	58,226	36,915	21,311
JANUARY	1,278,280	660,641	1,938,921	82,663	61,352	21,311
FEBRUARY	1,005,615	618,019	1,623,634	57,620	36,309	21,311
MARCH	873,726	660,641	1,534,367	54,296	32,985	21,311
APRIL	428,531	639,330	1,067,861	40,746	19,435	21,311
MAY	274,701	660,641	935,342	31,904	10,593	21,311
JUNE	162,548	639,330	801,878	29,191	7,880	21,311
JULY	96,596	660,641	757,237	25,089	3,778	21,311
AUGUST	139,633	660,641	800,274	29,250	7,939	21,311
SEPTEMBER	347,722	639,330	987,052	35,497	14,186	21,311
TOTAL	6,955,973	7,799,826	14,755,799			

* Includes LV-1 and T-4

DISTRIBUTION CAPACITY	
MAXIMUM DELIVERABILITY	81,700
MAX DELIVERABILITY WITH LNG	88,400
PEAK DAY SENDOUT	82,663
DAYS EXCEEDING MAX. DELV.	0

PY2021			DESIGN			
MONTH	CORE	INDUSTRY	TOTAL	PEAK DA	PEAK CORE	INDUSTRIAL CD*
OCTOBER	574,959	665,524	1,240,483	43,332	21,863	21,469
NOVEMBER	736,637	644,055	1,380,692	50,341	28,872	21,469
DECEMBER	1,105,736	665,524	1,771,260	59,469	38,000	21,469
JANUARY	1,315,819	665,524	1,981,343	84,623	63,154	21,469
FEBRUARY	1,001,167	601,118	1,602,285	58,843	37,374	21,469
MARCH	899,249	665,524	1,564,773	55,418	33,949	21,469
APRIL	441,008	644,055	1,085,063	41,470	20,001	21,469
MAY	282,670	665,524	948,194	32,370	10,901	21,469
JUNE	167,250	644,055	811,305	29,577	8,108	21,469
JULY	99,377	665,524	764,901	25,355	3,886	21,469
AUGUST	143,642	665,524	809,166	29,636	8,167	21,469
SEPTEMBER	357,666	644,055	1,001,721	36,060	14,591	21,469
TOTAL	7,125,180	7,836,003	14,961,183			

* Includes LV-1 and T-4

DISTRIBUTION CAPACITY	
MAXIMUM DELIVERABILITY	81,700
MAX DELIVERABILITY WITH LNG	88,400
PEAK DAY SENDOUT	84,623
DAYS EXCEEDING MAX. DELV.	0

PY2022				DESIGN			
MONTH	CORE	INDUSTRY	TOTAL	PEAK DA	PEAK CORE	INDUSTRIAL	CD*
OCTOBER	591,351	665,369	1,256,720	43,949	22,485		21,464
NOVEMBER	757,574	643,905	1,401,479	51,155	29,691		21,464
DECEMBER	1,137,068	665,369	1,802,437	60,539	39,075		21,464
JANUARY	1,353,020	665,369	2,018,389	86,404	64,940		21,464
FEBRUARY	1,029,422	600,978	1,630,400	59,894	38,430		21,464
MARCH	924,575	665,369	1,589,944	56,370	34,906		21,464
APRIL	453,397	643,905	1,097,302	42,027	20,563		21,464
MAY	290,588	665,369	955,957	32,670	11,206		21,464
JUNE	171,924	643,905	815,829	29,799	8,335		21,464
JULY	102,150	665,369	767,519	25,459	3,995		21,464
AUGUST	147,639	665,369	813,008	29,858	8,394		21,464
SEPTEMBER	367,598	643,905	1,011,503	36,460	14,996		21,464
TOTAL	7,326,306	7,834,178	15,160,484				

* Includes LV-1 and T-4

DISTRIBUTION CAPACITY	
MAXIMUM DELIVERABILITY	81,700
MAX DELIVERABILITY WITH LNG	88,400
PEAK DAY SENDOUT	86,404
DAYS EXCEEDING MAX. DELV.	0

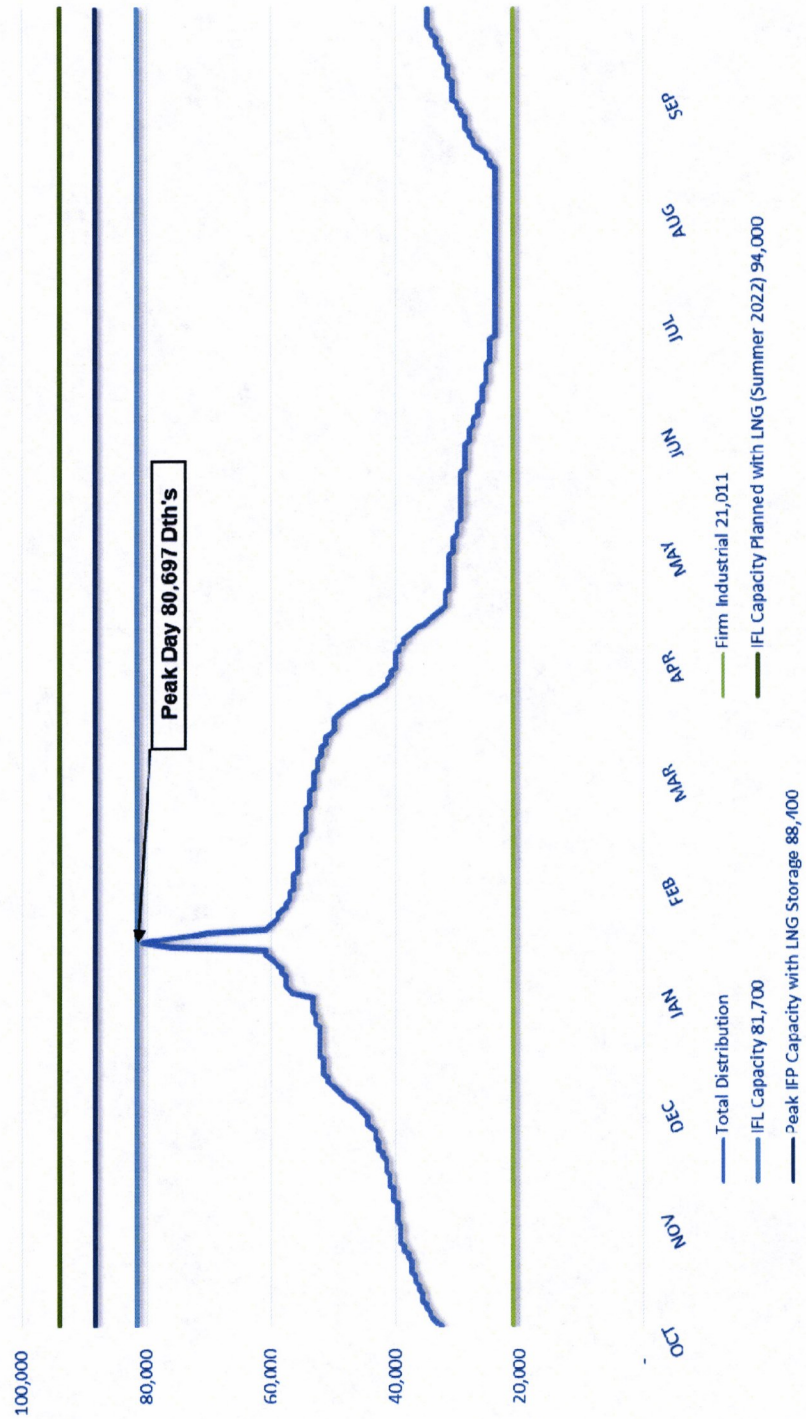
PY2023				DESIGN			
MONTH	CORE	INDUSTRY	TOTAL	PEAK DA	PEAK CORE	INDUSTRIAL	CD*
OCTOBER	607,726	672,111	1,279,837	44,788	23,107		21,681
NOVEMBER	778,498	650,430	1,428,928	52,191	30,510		21,681
DECEMBER	1,168,407	672,111	1,840,518	61,832	40,151		21,681
JANUARY	1,390,282	672,111	2,062,393	88,409	66,728		21,681
FEBRUARY	1,057,783	607,068	1,664,851	61,169	39,488		21,681
MARCH	950,053	672,111	1,622,164	57,549	35,868		21,681
APRIL	465,897	650,430	1,116,327	42,811	21,130		21,681
MAY	298,604	672,111	970,715	33,196	11,515		21,681
JUNE	176,667	650,430	827,097	30,246	8,565		21,681
JULY	104,969	672,111	777,080	25,786	4,105		21,681
AUGUST	151,715	672,111	823,826	30,307	8,626		21,681
SEPTEMBER	377,753	650,430	1,028,183	37,091	15,410		21,681
TOTAL	7,528,354	7,913,565	15,441,919				

* Includes LV-1 and T-4

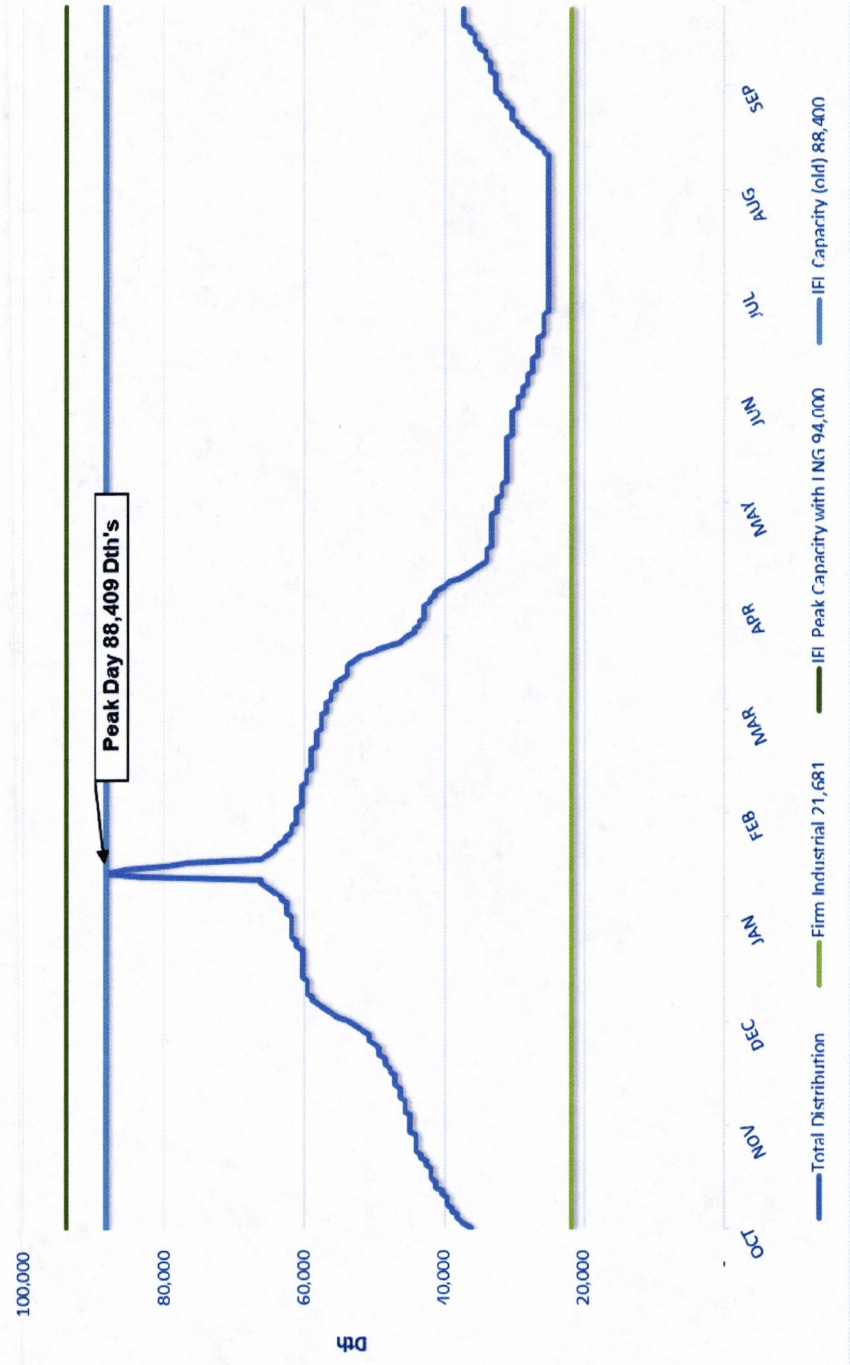
**Includes the completion of planned resources

DISTRIBUTION CAPACITY	
MAXIMUM DELIVERABILITY	81,700
MAX DELIVERABILITY WITH LNG**	94,000
PEAK DAY SENDOUT	88,409
DAYS EXCEEDING MAX. DELV.	0

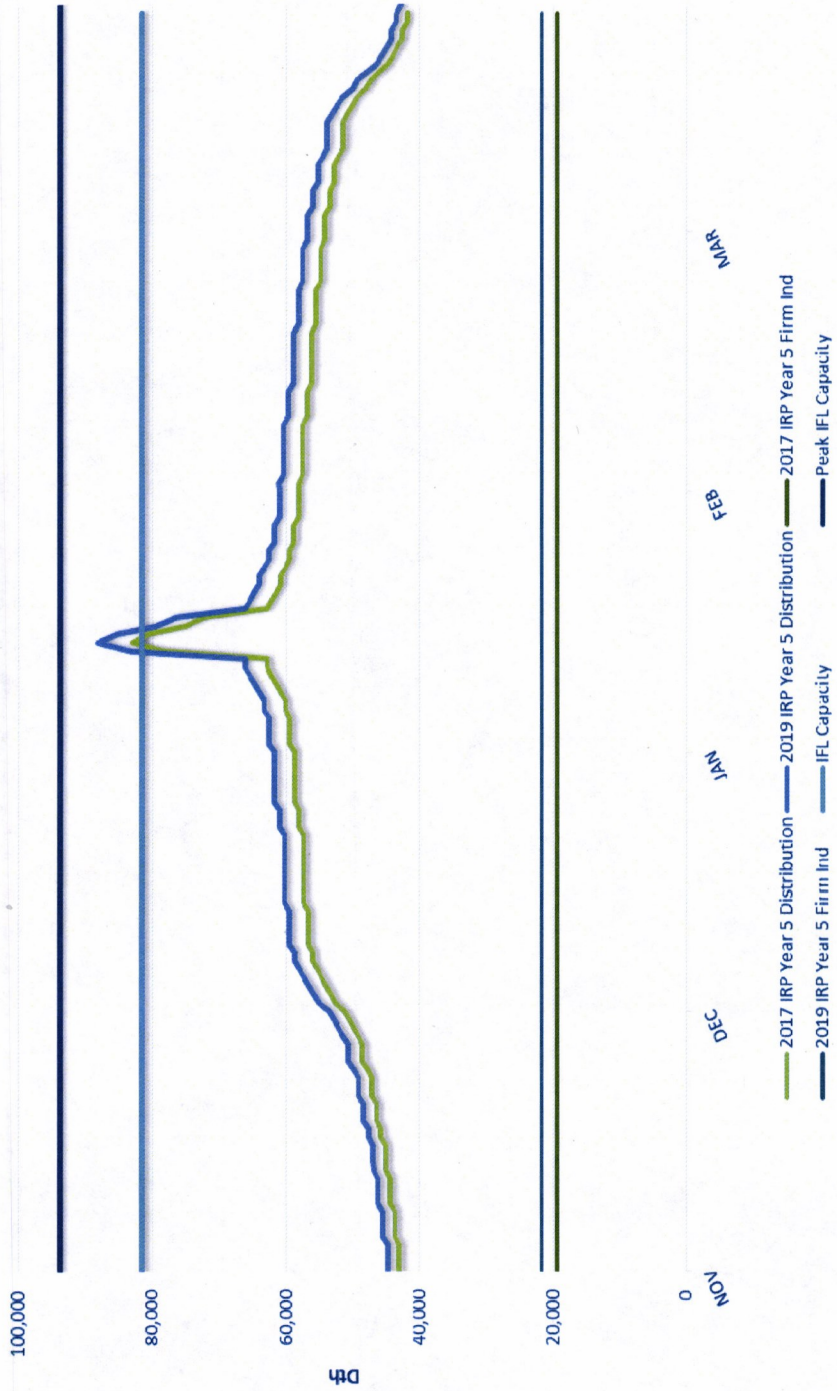
2019 Load Demand Curve
 Design Base Case
 Idaho Falls Lateral



**2023 Load Demand Curve
Design Base Case
Idaho Falls Lateral**



2017 vs. 2019 Year 5 Winter Comparison
Design Base Case
Idaho Falls Lateral



Intermountain Gas Company
Canyon County Area – Design Weather,
Base Case Load Demand Curve
Integrated Resource Plan 2019 – 2023



In the Community to Serve[®]

Exhibit No. 6
Section C
Fall 2019

Canyon County Design Weather - Base Price

PY2019				DESIGN			
MONTH	CORE	INDUSTRY	TOTAL	PEAK DA\	PEAK CORE	INDUSTRIAL	CD*
OCTOBER	519,920	787,245	1,307,165	46,209	20,814		25,395
NOVEMBER	689,507	761,850	1,451,357	51,833	26,438		25,395
DECEMBER	1,085,505	787,245	1,872,750	64,687	39,292		25,395
JANUARY	1,422,677	787,245	2,209,922	88,664	63,269		25,395
FEBRUARY	918,424	711,060	1,629,484	64,686	39,291		25,395
MARCH	795,186	787,245	1,582,431	54,360	28,965		25,395
APRIL	392,153	761,850	1,154,003	45,574	20,179		25,395
MAY	257,851	787,245	1,045,096	34,288	8,893		25,395
JUNE	114,887	761,850	876,737	32,681	7,286		25,395
JULY	74,223	787,245	861,468	27,794	2,399		25,395
AUGUST	96,098	787,245	883,343	31,122	5,727		25,395
SEPTEMBER	287,723	761,850	1,049,573	40,301	14,906		25,395
TOTAL	6,654,154	9,269,175	15,923,329				

* Includes LV-1 and T-4

DISTRIBUTION CAPACITY	
MAXIMUM DELIVERABILITY	98,000
PEAK DAY SENDOUT	88,664
DAYS EXCEEDING MAX. DELV.	0

PY2020				DESIGN			
MONTH	CORE	INDUSTRY	TOTAL	PEAK DA\	PEAK CORE	INDUSTRIAL	CD*
OCTOBER	540,253	787,245	1,327,498	47,072	21,677		25,395
NOVEMBER	719,716	761,850	1,481,566	53,045	27,650		25,395
DECEMBER	1,137,744	787,245	1,924,989	66,652	41,257		25,395
JANUARY	1,499,144	787,245	2,286,389	92,065	66,670		25,395
FEBRUARY	998,321	736,455	1,734,776	66,799	41,404		25,395
MARCH	838,092	787,245	1,625,337	55,922	30,527		25,395
APRIL	413,361	761,850	1,175,211	46,664	21,269		25,395
MAY	271,830	787,245	1,059,075	34,770	9,375		25,395
JUNE	121,126	761,850	882,976	33,076	7,681		25,395
JULY	78,266	787,245	865,511	27,925	2,530		25,395
AUGUST	101,347	787,245	888,592	31,435	6,040		25,395
SEPTEMBER	303,465	761,850	1,065,315	41,117	15,722		25,395
TOTAL	7,022,665	9,294,570	16,317,235				

* Includes LV-1 and T-4

DISTRIBUTION CAPACITY	
MAXIMUM DELIVERABILITY	98,000
PEAK DAY SENDOUT	92,065
DAYS EXCEEDING MAX. DELV.	0

PY2021				DESIGN			
MONTH	CORE	INDUSTRY	TOTAL	PEAK DA\	PEAK CORE	INDUSTRIAL	CD*
OCTOBER	569,878	781,743	1,351,621	48,086	22,868		25,218
NOVEMBER	759,270	756,525	1,515,795	54,389	29,171		25,218
DECEMBER	1,200,396	781,743	1,982,139	68,748	43,530		25,218
JANUARY	1,581,645	781,743	2,363,388	95,557	70,339		25,218
FEBRUARY	1,020,980	706,090	1,727,070	68,898	43,680		25,218
MARCH	883,913	781,743	1,665,656	57,416	32,198		25,218
APRIL	435,875	756,525	1,192,400	47,648	22,430		25,218
MAY	286,571	781,743	1,068,314	35,102	9,884		25,218
JUNE	127,672	756,525	884,197	33,315	8,097		25,218
JULY	82,476	781,743	864,219	27,884	2,666		25,218
AUGUST	106,775	781,743	888,518	31,580	6,362		25,218
SEPTEMBER	319,655	756,525	1,076,180	41,778	16,560		25,218
TOTAL	7,375,106	9,204,388	16,579,494				

* Includes LV-1 and T-4

DISTRIBUTION CAPACITY	
MAXIMUM DELIVERABILITY	98,000
PEAK DAY SENDOUT	95,557
DAYS EXCEEDING MAX. DELV.	0

PY2022				DESIGN		
MONTH	CORE	INDUSTRY	TOTAL	PEAK DAY	PEAK CORE	INDUSTRIAL CD*
OCTOBER	600,173	782,595	1,382,768	49,326	24,081	25,245
NOVEMBER	799,470	757,350	1,556,820	55,958	30,713	25,245
DECEMBER	1,263,730	782,595	2,046,325	71,069	45,824	25,245
JANUARY	1,664,882	782,595	2,447,477	99,286	74,041	25,245
FEBRUARY	1,074,601	732,105	1,806,706	71,221	45,976	25,245
MARCH	930,213	782,595	1,712,808	59,132	33,887	25,245
APRIL	458,647	757,350	1,215,997	48,848	23,603	25,245
MAY	301,500	782,595	1,084,095	35,644	10,399	25,245
JUNE	134,302	757,350	891,652	33,763	8,518	25,245
JULY	86,747	782,595	869,342	28,049	2,804	25,245
AUGUST	112,287	782,595	894,882	31,936	6,691	25,245
SEPTEMBER	336,117	757,350	1,093,467	42,657	17,412	25,245
TOTAL	7,762,669	9,239,670	17,002,339			

DISTRIBUTION CAPACITY	
MAXIMUM DELIVERABILITY**	106,000
PEAK DAY SENDOUT	99,286
DAYS EXCEEDING MAX. DELV.	0

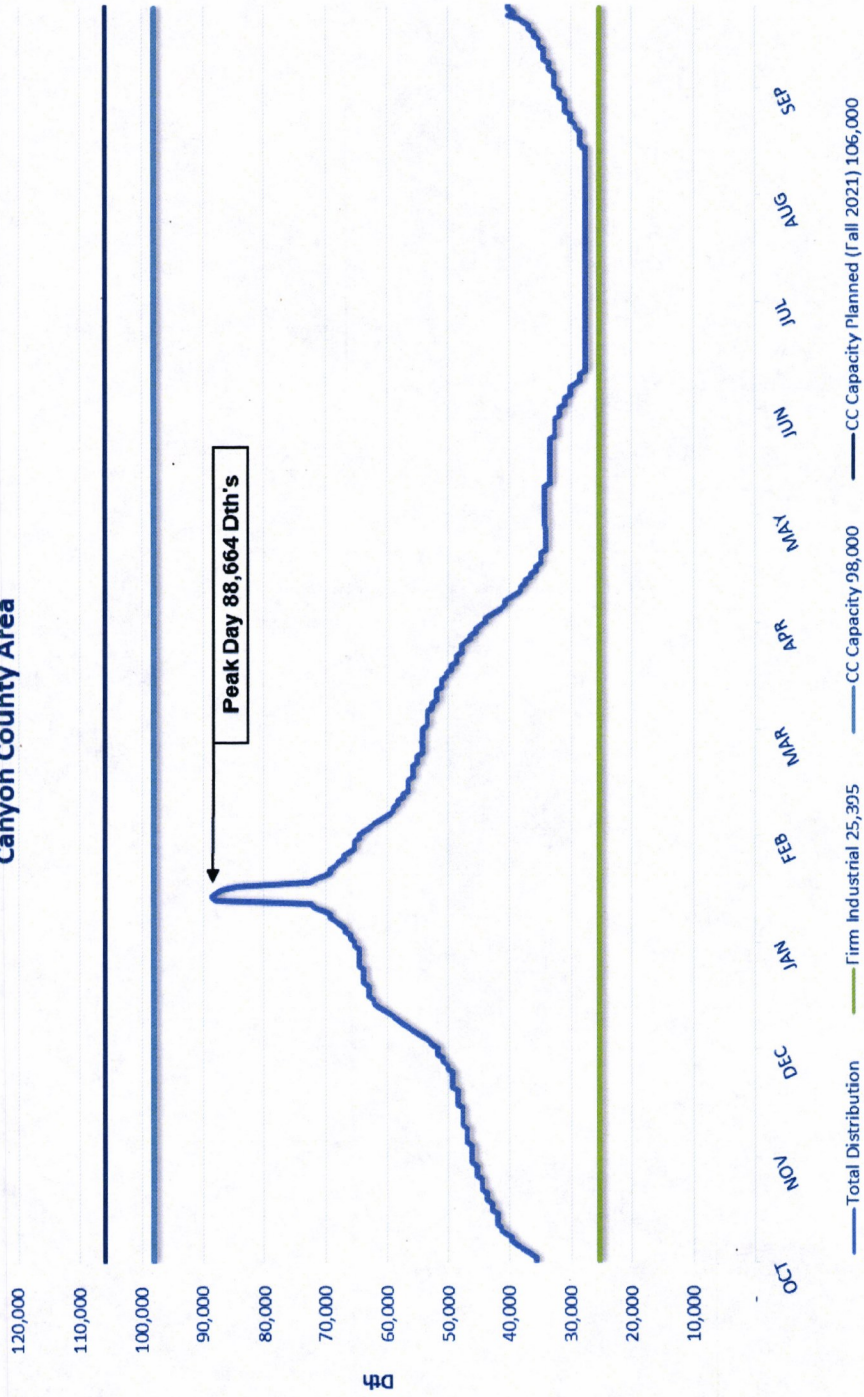
* Includes LV-1 and T-4
**Includes the completion of planned resources

PY2023				DESIGN		
MONTH	CORE	INDUSTRY	TOTAL	PEAK DAY	PEAK CORE	INDUSTRIAL CD*
OCTOBER	630,990	783,293	1,414,283	50,584	25,316	25,268
NOVEMBER	840,413	758,025	1,598,438	57,552	32,284	25,268
DECEMBER	1,328,289	783,293	2,111,582	73,430	48,162	25,268
JANUARY	1,749,810	783,293	2,533,103	103,086	77,818	25,268
FEBRUARY	1,129,378	707,490	1,836,868	73,588	48,320	25,268
MARCH	977,591	783,293	1,760,884	60,881	35,613	25,268
APRIL	481,987	758,025	1,240,012	50,072	24,804	25,268
MAY	316,825	783,293	1,100,118	36,195	10,927	25,268
JUNE	141,123	758,025	899,148	34,219	8,951	25,268
JULY	91,149	783,293	874,442	28,214	2,946	25,268
AUGUST	117,978	783,293	901,271	32,298	7,030	25,268
SEPTEMBER	353,138	758,025	1,111,163	43,561	18,293	25,268
TOTAL	8,158,671	9,222,638	17,381,309			

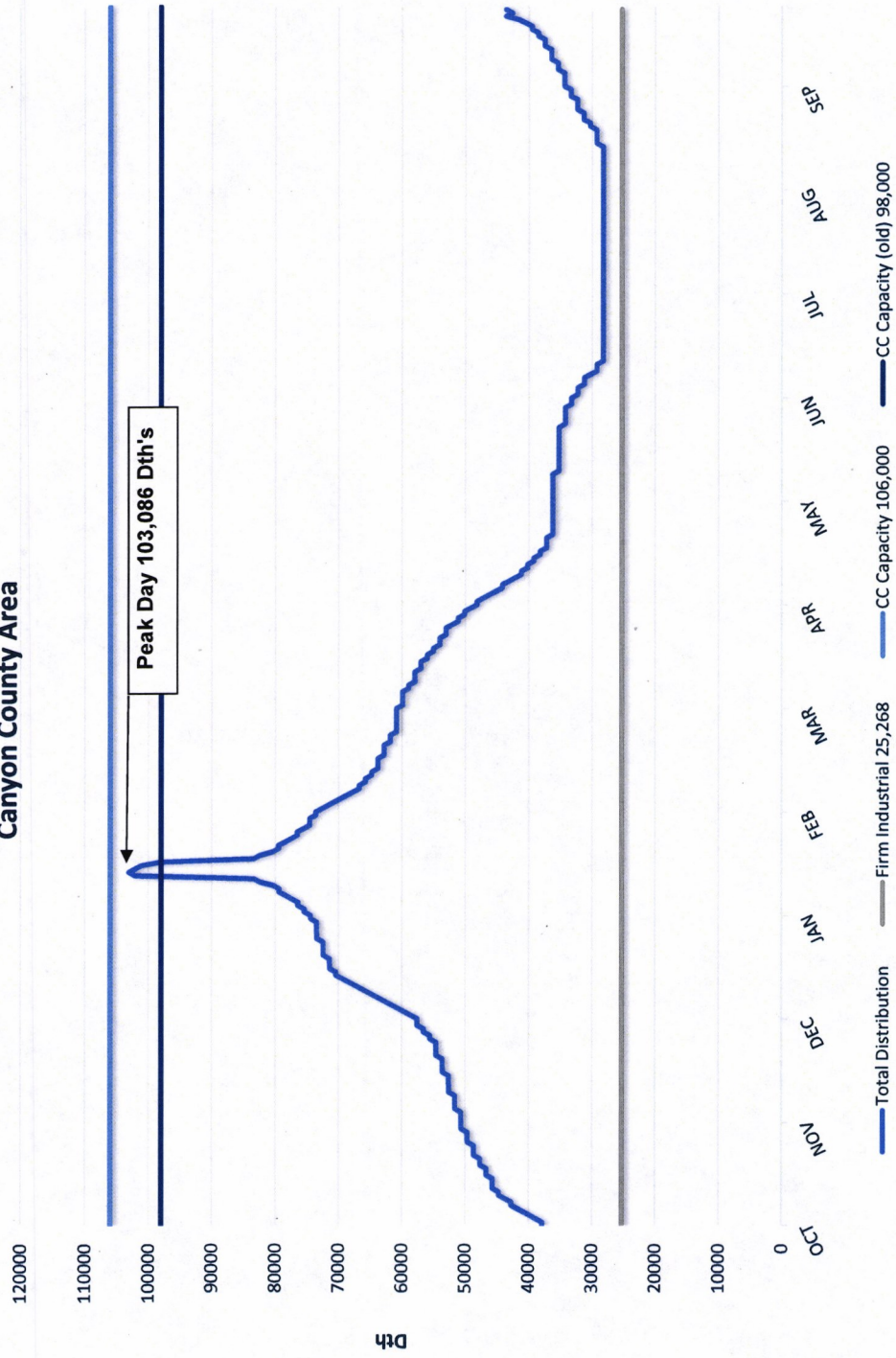
DISTRIBUTION CAPACITY	
MAXIMUM DELIVERABILITY**	106,000
PEAK DAY SENDOUT	103,086
DAYS EXCEEDING MAX. DELV.	0

* Includes LV-1 and T-4
**Includes the completion of planned resources

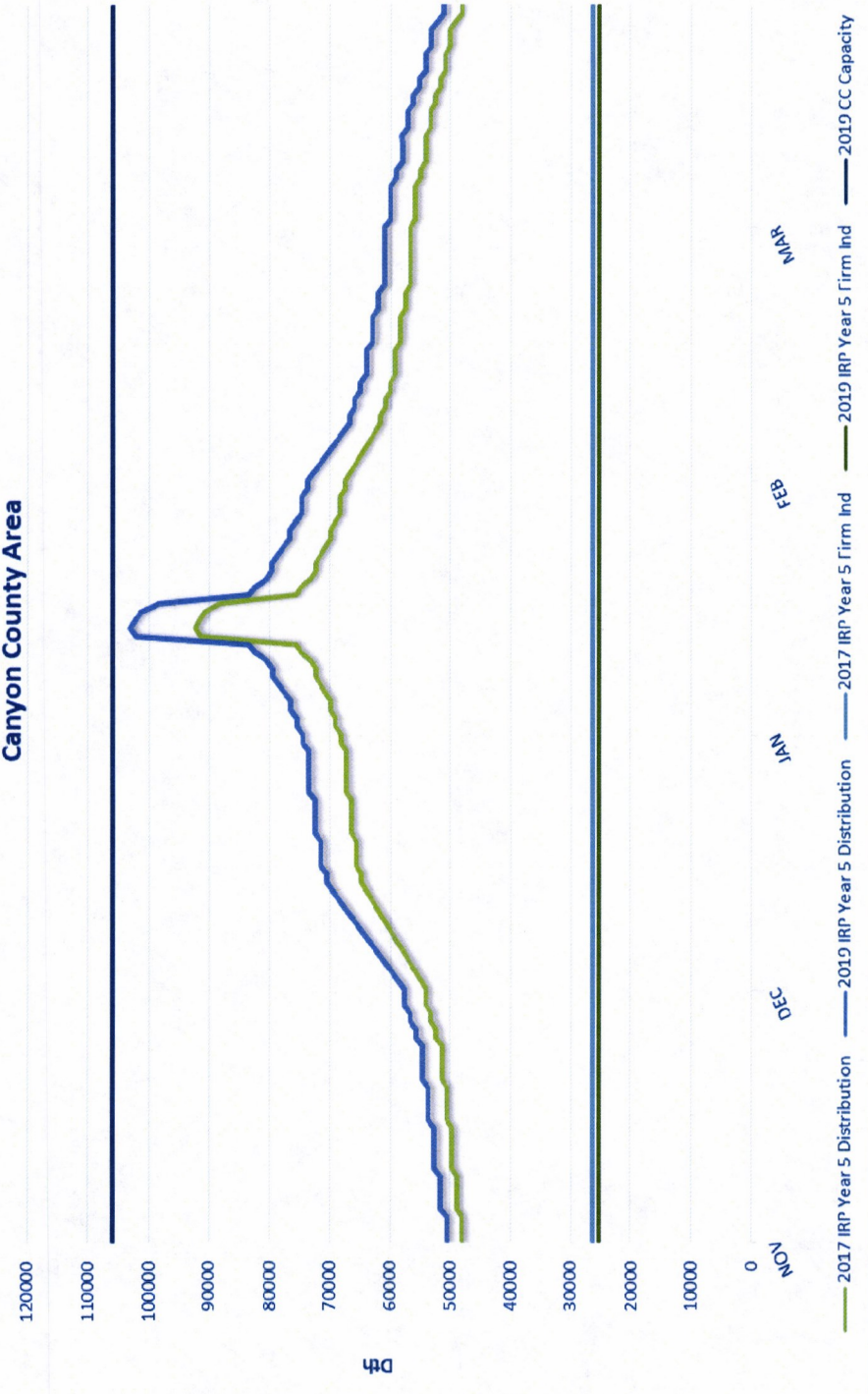
2019 Load Demand Curve
 Design Base Case
 Canyon County Area



2023 Load Demand Curve Design Base Case Canyon County Area



**2017 vs. 2019 Year 5 Winter Comparison
Design Base Case
Canyon County Area**



Intermountain Gas Company

**Sun Valley Lateral – Design Weather,
Base Case Load Demand Curve
Integrated Resource Plan 2019 – 2023**



In the Community to Serve[®]

Exhibit No. 6
Section D
Fall 2019

Sun Valley Design Weather - Base

PY2019		DESIGN					
MONTH	CORE	INDUSTRY	TOTAL	PEAK DAY	PEAK CORE	INDUSTRIAL	CD*
OCTOBER	174,257	41,385	215,642	7,725	6,390		1,335
NOVEMBER	231,555	40,050	271,605	10,807	9,472		1,335
DECEMBER	329,162	41,385	370,547	12,245	10,910		1,335
JANUARY	379,065	41,385	420,450	19,225	17,890		1,335
FEBRUARY	303,758	37,380	341,138	12,302	10,967		1,335
MARCH	272,697	41,385	314,082	11,892	10,557		1,335
APRIL	143,254	40,050	183,304	8,112	6,777		1,335
MAY	98,046	41,385	139,431	5,164	3,829		1,335
JUNE	44,341	40,050	84,391	3,688	2,353		1,335
JULY	21,284	41,385	62,669	2,206	871		1,335
AUGUST	34,534	41,385	75,919	3,488	2,153		1,335
SEPTEMBER	106,693	40,050	146,743	6,054	4,719		1,335
TOTAL	2,138,646	487,275	2,625,921				

* Includes LV-1 and T-4

DISTRIBUTION CAPACITY	
MAXIMUM DELIVERABILITY	19,878
PEAK DAY SENDOUT	19,225
DAYS EXCEEDING MAX. DELV.	0

PY2020		DESIGN					
MONTH	CORE	INDUSTRY	TOTAL	PEAK DAY	PEAK CORE	INDUSTRIAL	CD*
OCTOBER	181,313	42,625	223,938	8,030	6,655		1,375
NOVEMBER	241,416	41,250	282,666	11,258	9,883		1,375
DECEMBER	343,766	42,625	386,391	12,778	11,403		1,375
JANUARY	387,478	42,625	430,103	19,662	18,287		1,375
FEBRUARY	321,295	39,875	361,170	12,586	11,211		1,375
MARCH	278,775	42,625	321,400	12,167	10,792		1,375
APRIL	146,458	41,250	187,708	8,303	6,928		1,375
MAY	100,242	42,625	142,867	5,289	3,914		1,375
JUNE	45,337	41,250	86,587	3,781	2,406		1,375
JULY	21,766	42,625	64,391	2,266	891		1,375
AUGUST	35,313	42,625	77,938	3,577	2,202		1,375
SEPTEMBER	109,109	41,250	150,359	6,201	4,826		1,375
TOTAL	2,212,268	503,250	2,715,518				

* Includes LV-1 and T-4

DISTRIBUTION CAPACITY	
MAXIMUM DELIVERABILITY	19,878
PEAK DAY SENDOUT	19,662
DAYS EXCEEDING MAX. DELV.	0

PY2021		DESIGN					
MONTH	CORE	INDUSTRY	TOTAL	PEAK DAY	PEAK CORE	INDUSTRIAL	CD*
OCTOBER	185,438	43,245	228,683	8,202	6,807		1,395
NOVEMBER	246,922	41,850	288,772	11,504	10,109		1,395
DECEMBER	351,621	43,245	394,866	13,059	11,664		1,395
JANUARY	396,329	43,245	439,574	20,099	18,704		1,395
FEBRUARY	317,588	39,060	356,648	12,862	11,467		1,395
MARCH	285,111	43,245	328,356	12,433	11,038		1,395
APRIL	149,771	41,850	191,621	8,480	7,085		1,395
MAY	102,505	43,245	145,750	5,398	4,003		1,395
JUNE	46,354	41,850	88,204	3,855	2,460		1,395
JULY	22,253	43,245	65,498	2,306	911		1,395
AUGUST	36,101	43,245	79,346	3,646	2,251		1,395
SEPTEMBER	111,532	41,850	153,382	6,328	4,933		1,395
TOTAL	2,251,525	509,175	2,760,700				

* Includes LV-1 and T-4

**Includes the completion of planned resources

DISTRIBUTION CAPACITY	
MAXIMUM DELIVERABILITY**	22,000
PEAK DAY SENDOUT	20,099
DAYS EXCEEDING MAX. DELV.	0

PY2022				DESIGN			
MONTH	CORE	INDUSTRY	TOTAL	PEAK DAY	PEAK CORE	INDUSTRIAL	CD*
OCTOBER	189,536	43,245	232,781	8,352	6,957		1,395
NOVEMBER	252,363	41,850	294,213	11,726	10,331		1,395
DECEMBER	359,342	43,245	402,587	13,314	11,919		1,395
JANUARY	405,006	43,245	448,251	20,509	19,114		1,395
FEBRUARY	324,527	39,060	363,587	13,112	11,717		1,395
MARCH	291,321	43,245	334,566	12,673	11,278		1,395
APRIL	153,026	41,850	194,876	8,634	7,239		1,395
MAY	104,724	43,245	147,969	5,485	4,090		1,395
JUNE	47,356	41,850	89,206	3,908	2,513		1,395
JULY	22,729	43,245	65,974	2,325	930		1,395
AUGUST	36,874	43,245	80,119	3,694	2,299		1,395
SEPTEMBER	113,920	41,850	155,770	6,434	5,039		1,395
TOTAL	2,300,724	509,175	2,809,899				

DISTRIBUTION CAPACITY	
MAXIMUM DELIVERABILITY**	22,000
PEAK DAY SENDOUT	20,509
DAYS EXCEEDING MAX. DELV.	0

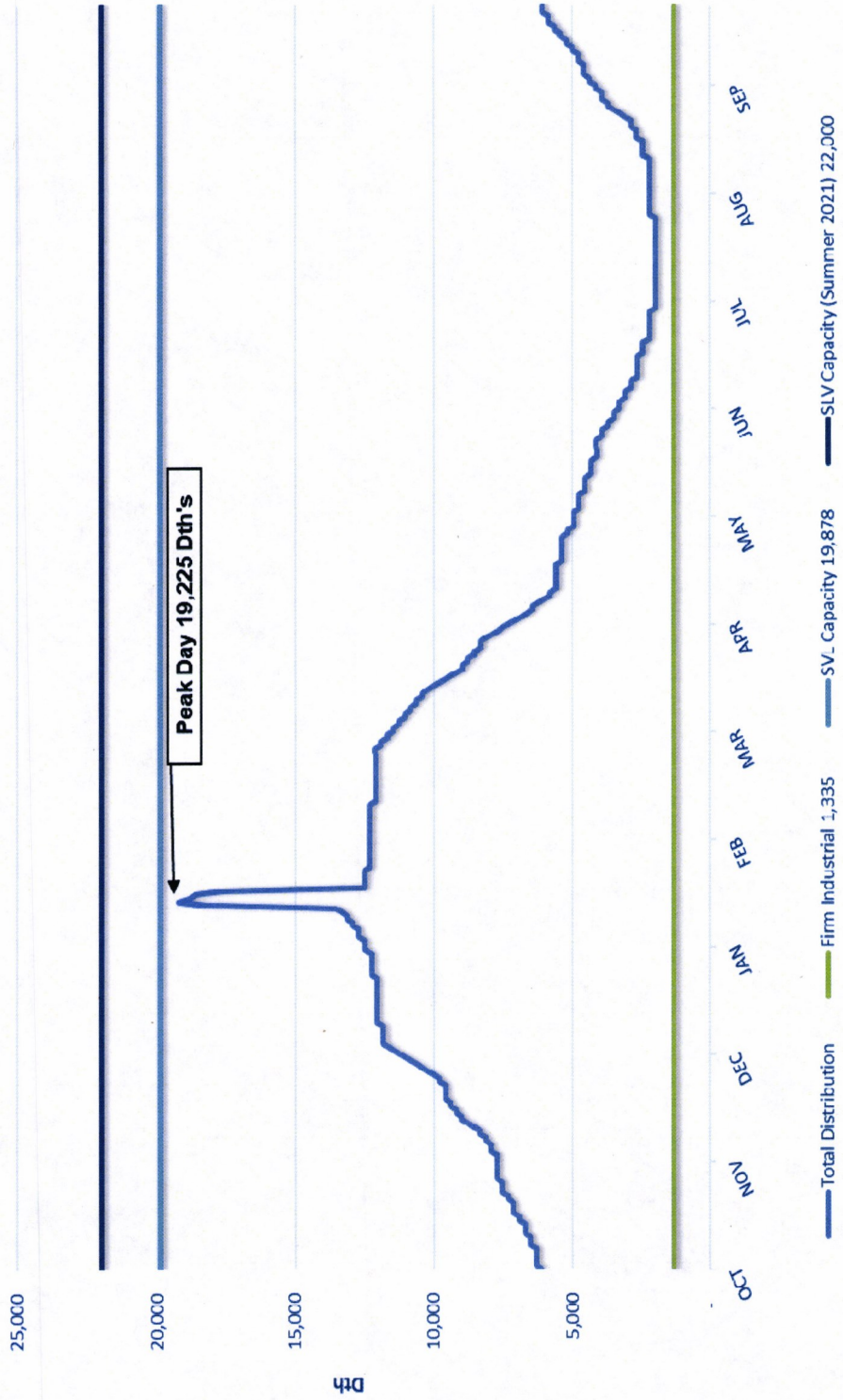
* Includes LV-1 and T-4
**Includes the completion of planned resources

PY2023				DESIGN			
MONTH	CORE	INDUSTRY	TOTAL	PEAK DAY	PEAK CORE	INDUSTRIAL	CD*
OCTOBER	193,579	42,780	236,359	8,485	7,105		1,380
NOVEMBER	257,730	41,400	299,130	11,931	10,551		1,380
DECEMBER	366,964	42,780	409,744	13,552	12,172		1,380
JANUARY	413,583	42,780	456,363	20,899	19,519		1,380
FEBRUARY	331,397	38,640	370,037	13,345	11,965		1,380
MARCH	297,486	42,780	340,266	12,897	11,517		1,380
APRIL	156,262	41,400	197,662	8,772	7,392		1,380
MAY	106,939	42,780	149,719	5,556	4,176		1,380
JUNE	48,360	41,400	89,760	3,946	2,566		1,380
JULY	23,210	42,780	65,990	2,330	950		1,380
AUGUST	37,654	42,780	80,434	3,728	2,348		1,380
SEPTEMBER	116,318	41,400	157,718	6,525	5,145		1,380
TOTAL	2,349,482	503,700	2,853,182				

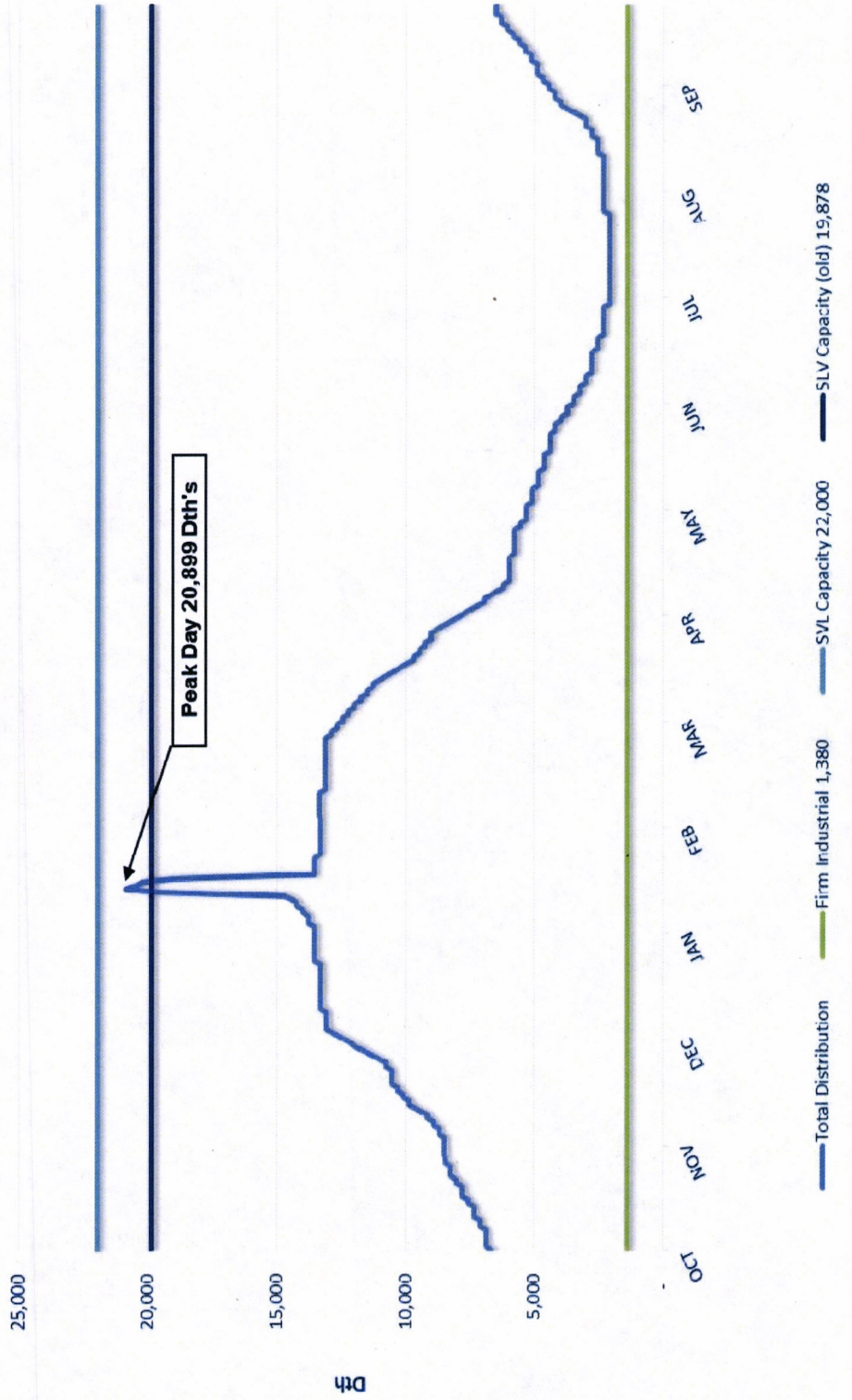
DISTRIBUTION CAPACITY	
MAXIMUM DELIVERABILITY**	22,000
PEAK DAY SENDOUT	20,899
DAYS EXCEEDING MAX. DELV.	0

* Includes LV-1 and T-4
**Includes the completion of planned resources

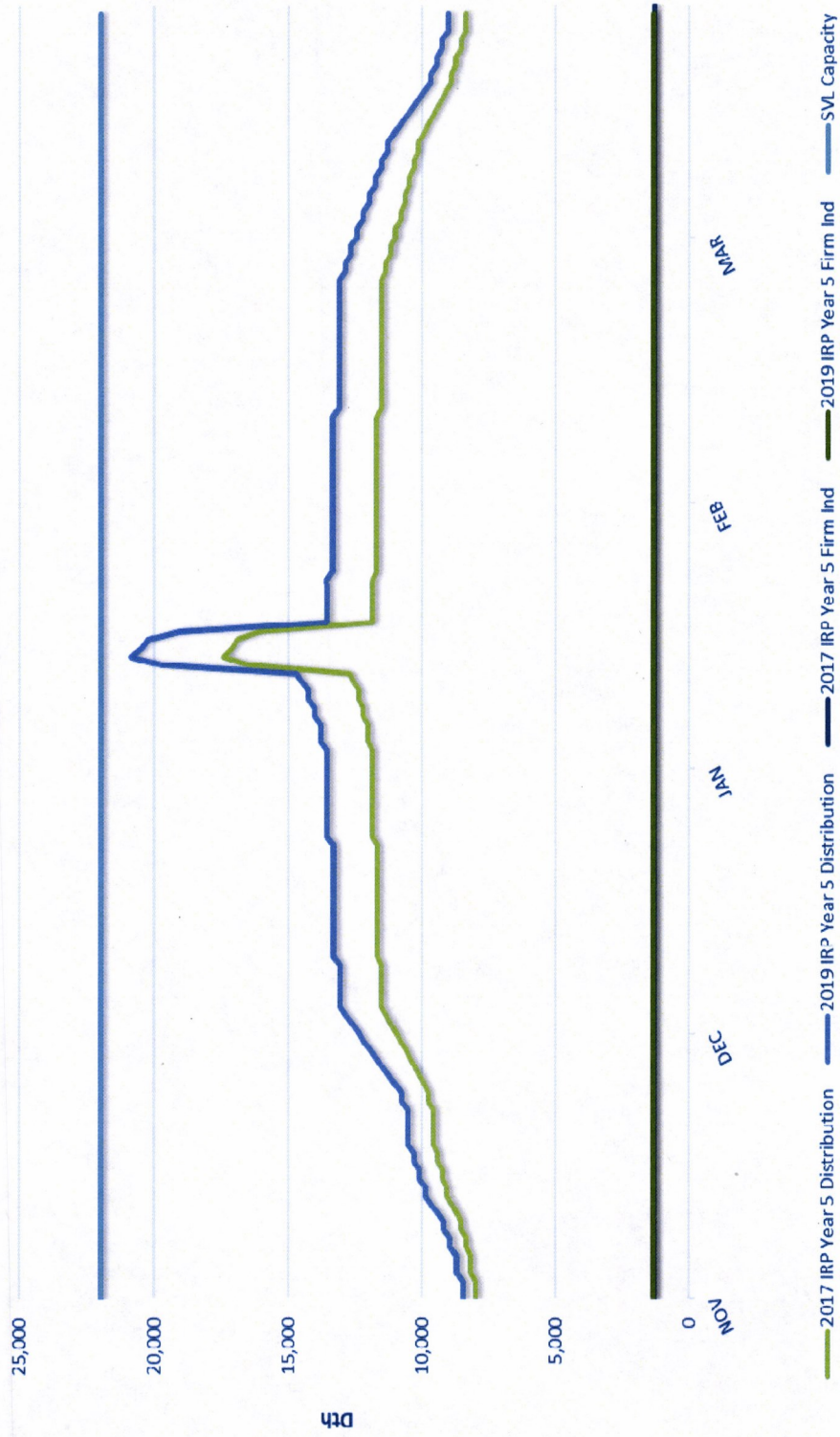
2019 Load Demand Curve
 Design Base Case
 Sun Valley Lateral



2023 Load Demand Curve
Design Base Case
Sun Valley Lateral



2017 vs. 2019 Year 5 Winter Comparison
Design Base Case
Sun Valley Lateral



Intermountain Gas Company

**State Street Lateral – Design Weather,
Base Case Load Demand Curve
Integrated Resource Plan 2019 – 2023**



In the Community to Serve[®]

Exhibit No. 6
Section E
Fall 2019

State St. Design Weather - Base

PY2019				DESIGN			
MONTH	CORE	INDUSTRY	TOTAL	PEAK DA\	PEAK CORE	INDUSTRIAL	CD*
OCTOBER	528,692	37,820	566,512	22,396	21,176		1,220
NOVEMBER	701,619	36,600	738,219	28,129	26,909		1,220
DECEMBER	1,105,268	37,820	1,143,088	41,233	40,013		1,220
JANUARY	1,452,923	37,820	1,490,743	65,854	64,634		1,220
FEBRUARY	936,002	34,160	970,162	41,303	40,083		1,220
MARCH	808,420	37,820	846,240	30,698	29,478		1,220
APRIL	397,172	36,600	433,772	21,698	20,478		1,220
MAY	260,004	37,820	297,824	10,192	8,972		1,220
JUNE	114,881	36,600	151,481	8,551	7,331		1,220
JULY	73,521	37,820	111,341	3,594	2,374		1,220
AUGUST	95,354	37,820	133,174	6,934	5,714		1,220
SEPTEMBER	287,631	36,600	324,231	16,133	14,913		1,220
TOTAL	6,761,487	445,300	7,206,787				

* Includes LV-1 and T-4

DISTRIBUTION CAPACITY	
MAXIMUM DELIVERABILITY	73,000
PEAK DAY SENDOUT	65,854
DAYS EXCEEDING MAX. DELV.	0

PY2020				DESIGN			
MONTH	CORE	INDUSTRY	TOTAL	PEAK DA\	PEAK CORE	INDUSTRIAL	CD*
OCTOBER	539,977	37,820	577,797	22,873	21,653		1,220
NOVEMBER	718,252	36,600	754,852	28,795	27,575		1,220
DECEMBER	1,133,868	37,820	1,171,688	42,306	41,086		1,220
JANUARY	1,491,867	37,820	1,529,687	67,587	66,367		1,220
FEBRUARY	991,322	35,380	1,026,702	42,377	41,157		1,220
MARCH	830,090	37,820	867,910	31,488	30,268		1,220
APRIL	407,823	36,600	444,423	22,247	21,027		1,220
MAY	266,974	37,820	304,794	10,433	9,213		1,220
JUNE	117,959	36,600	154,559	8,747	7,527		1,220
JULY	75,493	37,820	113,313	3,658	2,438		1,220
AUGUST	97,909	37,820	135,729	7,087	5,867		1,220
SEPTEMBER	295,342	36,600	331,942	16,533	15,313		1,220
TOTAL	6,966,876	446,520	7,413,396				

* Includes LV-1 and T-4

DISTRIBUTION CAPACITY	
MAXIMUM DELIVERABILITY	73,000
PEAK DAY SENDOUT	67,587
DAYS EXCEEDING MAX. DELV.	0

PY2021				DESIGN			
MONTH	CORE	INDUSTRY	TOTAL	PEAK DA\	PEAK CORE	INDUSTRIAL	CD*
OCTOBER	554,451	37,820	592,271	23,454	22,234		1,220
NOVEMBER	737,508	36,600	774,108	29,534	28,314		1,220
DECEMBER	1,164,264	37,820	1,202,084	43,407	42,187		1,220
JANUARY	1,531,862	37,820	1,569,682	69,366	68,146		1,220
FEBRUARY	986,858	34,160	1,021,018	43,481	42,261		1,220
MARCH	852,344	37,820	890,164	32,299	31,079		1,220
APRIL	418,755	36,600	455,355	22,811	21,591		1,220
MAY	274,132	37,820	311,952	10,680	9,460		1,220
JUNE	121,121	36,600	157,721	8,949	7,729		1,220
JULY	77,517	37,820	115,337	3,723	2,503		1,220
AUGUST	100,534	37,820	138,354	7,244	6,024		1,220
SEPTEMBER	303,261	36,600	339,861	16,944	15,724		1,220
TOTAL	7,122,607	445,300	7,567,907				

* Includes LV-1 and T-4

DISTRIBUTION CAPACITY	
MAXIMUM DELIVERABILITY	73,000
PEAK DAY SENDOUT	69,366
DAYS EXCEEDING MAX. DELV.	0

PY2022				DESIGN			
MONTH	CORE	INDUSTRY	TOTAL	PEAK DA\	PEAK CORE	INDUSTRIAL	CD*
OCTOBER	569,318	37,820	607,138	24,050	22,830		1,220
NOVEMBER	757,282	36,600	793,882	30,293	29,073		1,220
DECEMBER	1,195,486	37,820	1,233,306	44,539	43,319		1,220
JANUARY	1,572,936	37,820	1,610,756	71,193	69,973		1,220
FEBRUARY	1,013,321	34,160	1,047,481	44,614	43,394		1,220
MARCH	875,202	37,820	913,022	33,133	31,913		1,220
APRIL	429,984	36,600	466,584	23,390	22,170		1,220
MAY	281,483	37,820	319,303	10,933	9,713		1,220
JUNE	124,371	36,600	160,971	9,156	7,936		1,220
JULY	79,594	37,820	117,414	3,790	2,570		1,220
AUGUST	103,231	37,820	141,051	7,406	6,186		1,220
SEPTEMBER	311,393	36,600	347,993	17,366	16,146		1,220
TOTAL	7,313,601	445,300	7,758,901				

* Includes LV-1 and T-4

DISTRIBUTION CAPACITY	
MAXIMUM DELIVERABILITY	73,000
PEAK DAY SENDOUT	71,193
DAYS EXCEEDING MAX. DELV.	0

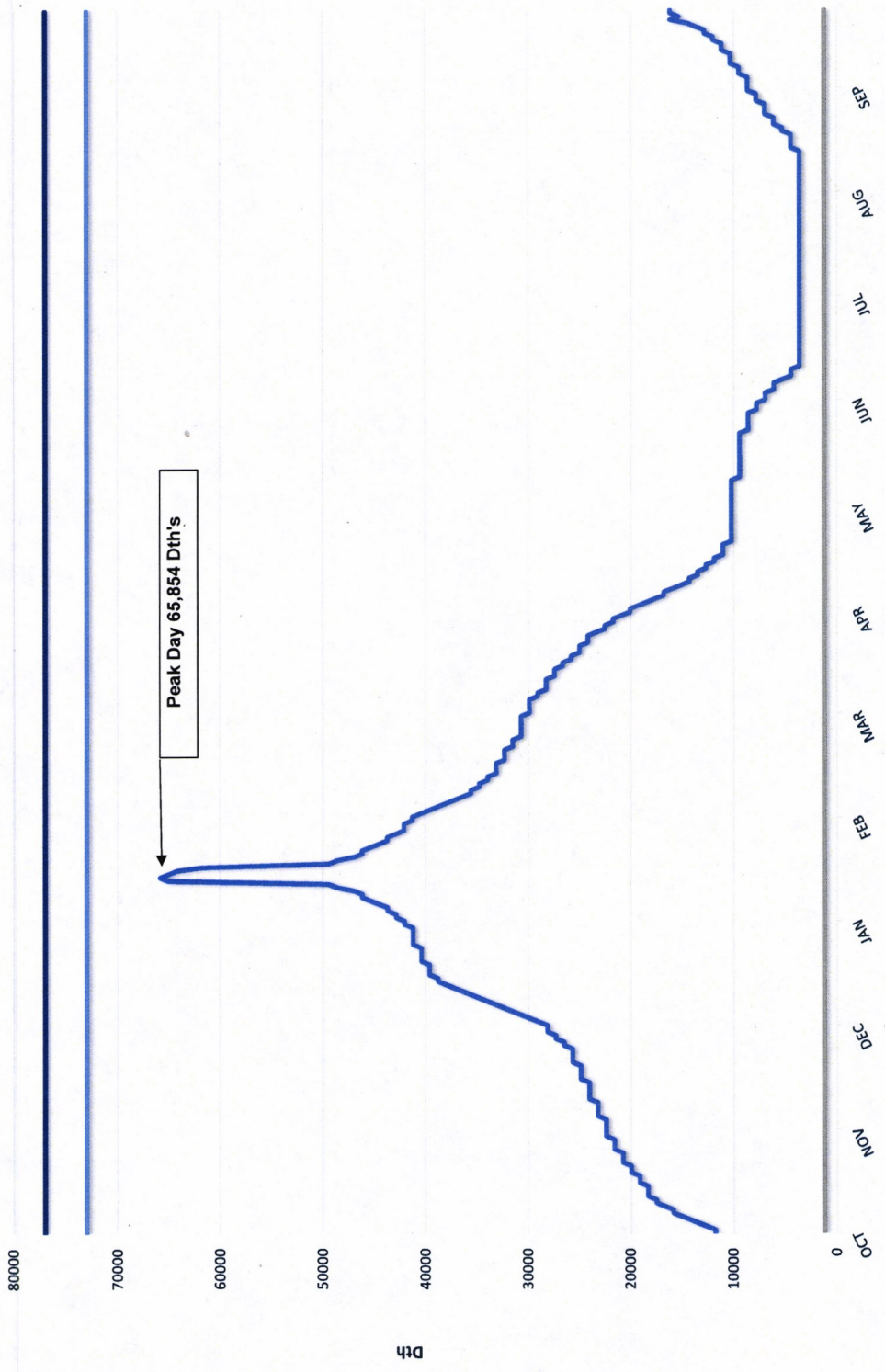
PY2023				DESIGN			
MONTH	CORE	INDUSTRY	TOTAL	PEAK DA\	PEAK CORE	INDUSTRIAL	CD*
OCTOBER	584,585	37,820	622,405	24,662	23,442		1,220
NOVEMBER	777,591	36,600	814,191	31,073	29,853		1,220
DECEMBER	1,227,545	37,820	1,265,365	45,700	44,480		1,220
JANUARY	1,615,125	37,820	1,652,945	73,070	71,850		1,220
FEBRUARY	1,040,499	34,160	1,074,659	45,778	44,558		1,220
MARCH	898,675	37,820	936,495	33,988	32,768		1,220
APRIL	441,517	36,600	478,117	23,985	22,765		1,220
MAY	289,032	37,820	326,852	11,194	9,974		1,220
JUNE	127,707	36,600	164,307	9,369	8,149		1,220
JULY	81,730	37,820	119,550	3,859	2,639		1,220
AUGUST	106,000	37,820	143,820	7,572	6,352		1,220
SEPTEMBER	319,747	36,600	356,347	17,799	16,579		1,220
TOTAL	7,509,753	445,300	7,955,053				

* Includes LV-1 and T-4

**Includes the completion of planned resources

DISTRIBUTION CAPACITY	
MAXIMUM DELIVERABILITY**	77,000
PEAK DAY SENDOUT	73,070
DAYS EXCEEDING MAX. DELV.	0

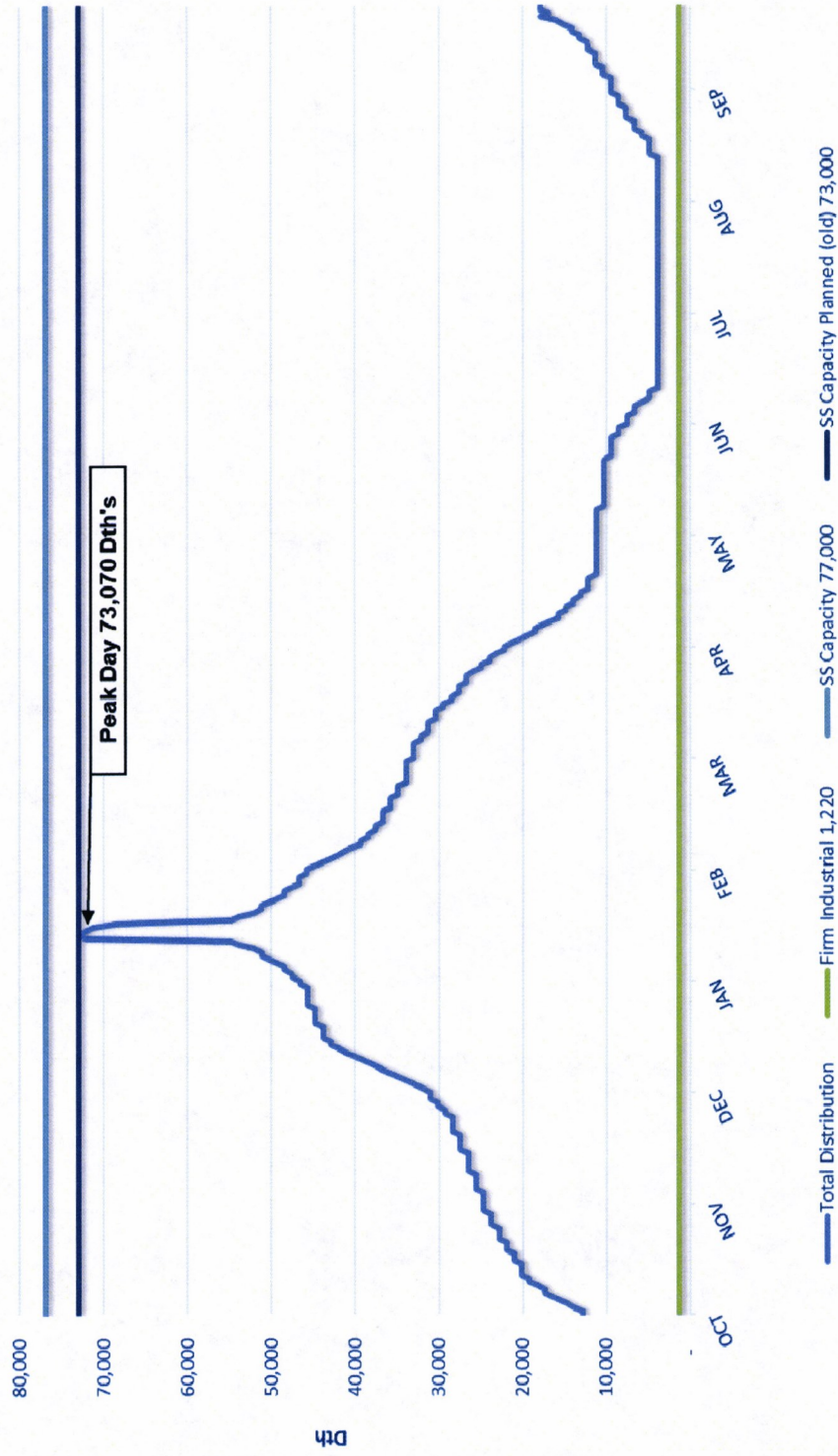
2019 Load Demand Curve
Design Base Case
State Street Lateral



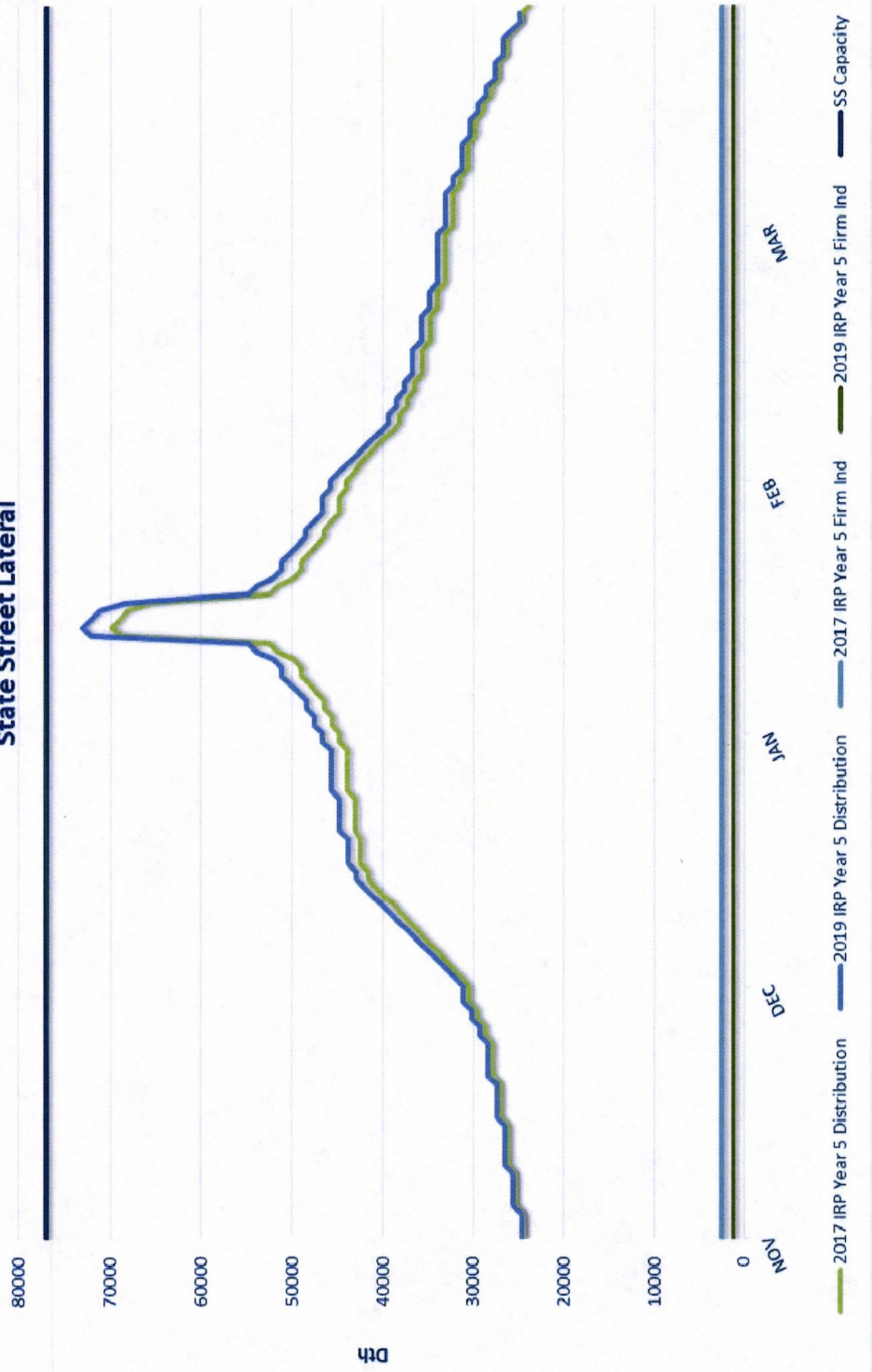
Peak Day 65,854 Dth's

— Total Distribution — Firm Industrial 1,220 — SS Capacity 73,000 — SS Capacity Planned (Summer 2022) 77,000

2023 Load Demand Curve
Design Base Case
State Street Lateral



2017 vs. 2019 Year 5 Winter Comparison
Design Base Case
State Street Lateral



Intermountain Gas Company

**Central Ada Lateral – Design Weather,
Base Case Load Demand Curve
Integrated Resource Plan 2019 – 2023**



In the Community to Serve[®]

Exhibit No. 6
Section F
Fall 2019

Central Ada Design Weather - Base

PY2019			DESIGN			
MONTH	CORE	INDUSTRY	TOTAL	PEAK DA\	PEAK CORE	INDUSTRIAL CD*
OCTOBER	526,259	43,710	569,969	22,753	21,343	1,410
NOVEMBER	701,383	42,300	743,683	27,706	26,296	1,410
DECEMBER	1,100,808	43,710	1,144,518	41,740	40,330	1,410
JANUARY	1,452,849	43,710	1,496,559	66,041	64,631	1,410
FEBRUARY	935,865	39,480	975,345	41,489	40,079	1,410
MARCH	808,200	43,710	851,910	30,881	29,471	1,410
APRIL	397,017	42,300	439,317	21,881	20,471	1,410
MAY	259,862	43,710	303,572	10,377	8,967	1,410
JUNE	114,802	42,300	157,102	8,736	7,326	1,410
JULY	73,460	43,710	117,170	3,782	2,372	1,410
AUGUST	95,260	43,710	138,970	7,118	5,708	1,410
SEPTEMBER	287,314	42,300	329,614	16,306	14,896	1,410
TOTAL	6,753,079	514,650	7,267,729			

* Includes LV-1 and T-4

DISTRIBUTION CAPACITY	
MAXIMUM DELIVERABILITY	70,000
PEAK DAY SENDOUT	66,041
DAYS EXCEEDING MAX. DELV.	0

PY2020			DESIGN			
MONTH	CORE	INDUSTRY	TOTAL	PEAK DA\	PEAK CORE	INDUSTRIAL CD*
OCTOBER	532,625	43,710	576,335	23,035	21,625	1,410
NOVEMBER	711,408	42,300	753,708	28,107	26,697	1,410
DECEMBER	1,118,765	43,710	1,162,475	42,433	41,023	1,410
JANUARY	1,489,494	43,710	1,533,204	67,671	66,261	1,410
FEBRUARY	989,646	40,890	1,030,536	42,500	41,090	1,410
MARCH	828,586	43,710	872,296	31,624	30,214	1,410
APRIL	407,033	42,300	449,333	22,398	20,988	1,410
MAY	266,416	43,710	310,126	10,604	9,194	1,410
JUNE	117,696	42,300	159,996	8,921	7,511	1,410
JULY	75,313	43,710	119,023	3,842	2,432	1,410
AUGUST	97,664	43,710	141,374	7,262	5,852	1,410
SEPTEMBER	294,562	42,300	336,862	16,682	15,272	1,410
TOTAL	6,929,208	516,060	7,445,268			

* Includes LV-1 and T-4

DISTRIBUTION CAPACITY	
MAXIMUM DELIVERABILITY	70,000
PEAK DAY SENDOUT	67,671
DAYS EXCEEDING MAX. DELV.	0

PY2021			DESIGN			
MONTH	CORE	INDUSTRY	TOTAL	PEAK DA\	PEAK CORE	INDUSTRIAL CD*
OCTOBER	546,056	44,873	590,929	23,618	22,170	1,448
NOVEMBER	729,350	43,425	772,775	28,818	27,370	1,448
DECEMBER	1,146,976	44,873	1,191,849	43,505	42,057	1,448
JANUARY	1,527,058	44,873	1,571,931	69,380	67,932	1,448
FEBRUARY	983,662	40,530	1,024,192	43,574	42,126	1,448
MARCH	849,482	44,873	894,355	32,424	30,976	1,448
APRIL	417,294	43,425	460,719	22,965	21,517	1,448
MAY	273,135	44,873	318,008	10,873	9,425	1,448
JUNE	120,666	43,425	164,091	9,148	7,700	1,448
JULY	77,213	44,873	122,086	3,941	2,493	1,448
AUGUST	100,127	44,873	145,000	7,448	6,000	1,448
SEPTEMBER	301,989	43,425	345,414	17,105	15,657	1,448
TOTAL	7,073,008	528,338	7,601,346			

* Includes LV-1 and T-4

DISTRIBUTION CAPACITY	
MAXIMUM DELIVERABILITY	70,000
PEAK DAY SENDOUT	69,380
DAYS EXCEEDING MAX. DELV.	0

PY2022				DESIGN		
MONTH	CORE	INDUSTRY	TOTAL	PEAK DA\	PEAK CORE	INDUSTRIAL CD*
OCTOBER	559,826	46,035	605,861	24,214	22,729	1,485
NOVEMBER	747,741	44,550	792,291	29,546	28,061	1,485
DECEMBER	1,175,897	46,035	1,221,932	44,602	43,117	1,485
JANUARY	1,565,558	46,035	1,611,593	71,130	69,645	1,485
FEBRUARY	1,008,463	41,580	1,050,043	44,673	43,188	1,485
MARCH	870,897	46,035	916,932	33,242	31,757	1,485
APRIL	427,816	44,550	472,366	23,544	22,059	1,485
MAY	280,019	46,035	326,054	11,148	9,663	1,485
JUNE	123,709	44,550	168,259	9,380	7,895	1,485
JULY	79,159	46,035	125,194	4,041	2,556	1,485
AUGUST	102,650	46,035	148,685	7,636	6,151	1,485
SEPTEMBER	309,603	44,550	354,153	17,537	16,052	1,485
TOTAL	7,251,338	542,025	7,793,363			

* Includes LV-1 and T-4

**Includes the completion of planned resources

DISTRIBUTION CAPACITY	
MAXIMUM DELIVERABILITY**	78,000
PEAK DAY SENDOUT	71,130
DAYS EXCEEDING MAX. DELV.	0

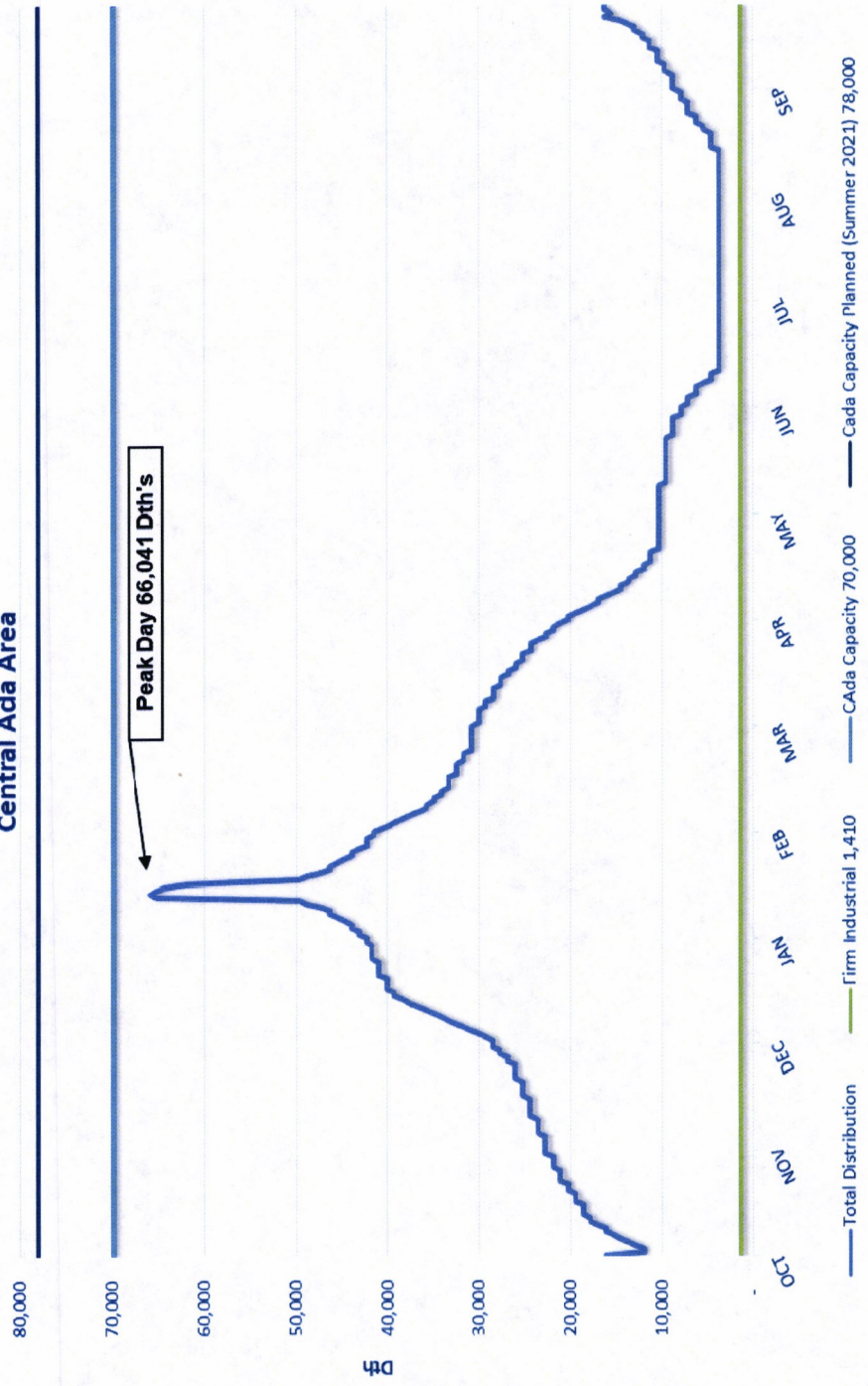
PY2023				DESIGN		
MONTH	CORE	INDUSTRY	TOTAL	PEAK DA\	PEAK CORE	INDUSTRIAL CD*
OCTOBER	573,940	47,430	621,370	24,832	23,302	1,530
NOVEMBER	766,590	45,900	812,490	30,298	28,768	1,530
DECEMBER	1,205,540	47,430	1,252,970	45,734	44,204	1,530
JANUARY	1,605,024	47,430	1,652,454	72,931	71,401	1,530
FEBRUARY	1,033,887	42,840	1,076,727	45,807	44,277	1,530
MARCH	892,850	47,430	940,280	34,088	32,558	1,530
APRIL	438,599	45,900	484,499	24,145	22,615	1,530
MAY	287,079	47,430	334,509	11,437	9,907	1,530
JUNE	126,825	45,900	172,725	9,624	8,094	1,530
JULY	81,155	47,430	128,585	4,150	2,620	1,530
AUGUST	105,238	47,430	152,668	7,836	6,306	1,530
SEPTEMBER	317,405	45,900	363,305	17,986	16,456	1,530
TOTAL	7,434,132	558,450	7,992,582			

* Includes LV-1 and T-4

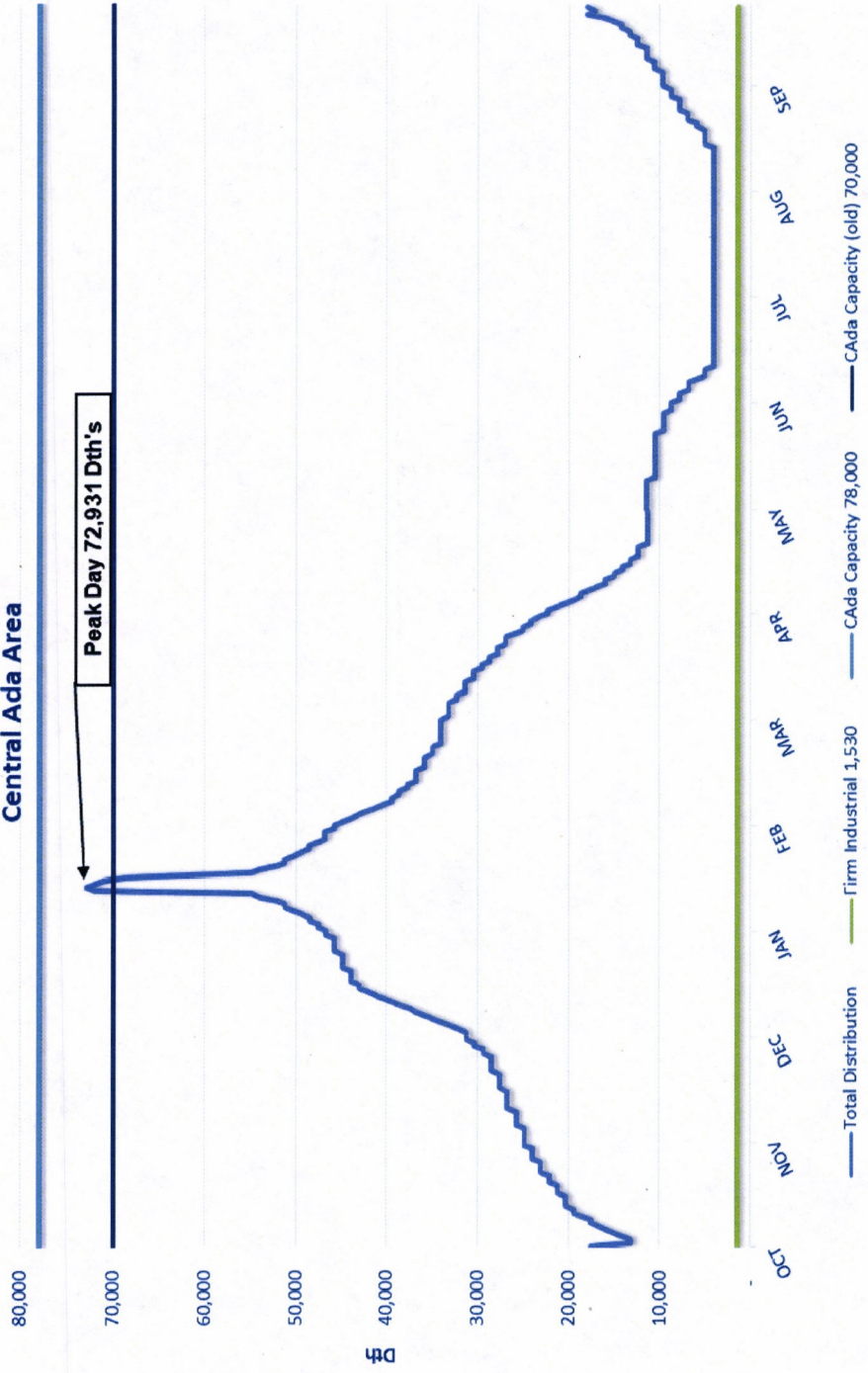
**Includes the completion of planned resources

DISTRIBUTION CAPACITY	
MAXIMUM DELIVERABILITY**	78,000
PEAK DAY SENDOUT	72,931
DAYS EXCEEDING MAX. DELV.	0

2019 Load Demand Curve
 Design Base Case
 Central Ada Area



2023 Load Demand Curve
Design Base Case
Central Ada Area



2017 vs. 2019 Year 5 Winter Comparison Design Base Case Central Ada Area

